

341.65

341.65

170.81

170.81

170.81

123.

124.20

27

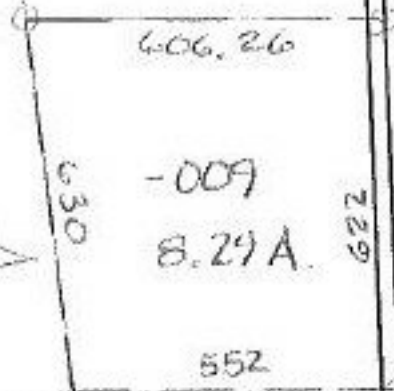
-012
50.00 A.

-016
21.13 A.

-014 6.00 A.

-010
55.71 A. ~~64.00 A.~~

SEE SURVEY:
A. KOEPP
CL. 1: 16,666



282.13
-015
.87A
282.13

1933.89

775

37

-007
33.51 A.

-008
13.49 A.

1923

793.98

#15726

APPROVED
LORAIN CO.
MAP DEPT.

DATE 8-6-84

PAGE 9-C

BY: T. McVain

VOID
IF
REPRODUCED

12-19-85

-005
50.00 A.

-005

958.98

744.60

223.44

181.30

850.93

239.36

769.10

778.65

1606.40

30
NON-BOX

NON-BOX