

Line

210.5

AC. CORRECTION
& ADD TO DUP. (2 PARCELS)

#15700

APPROVED
LORAIN CO.
MAP DEPT.

DATE 7.16.84

PAGE 13.11.025

BY T. McMain

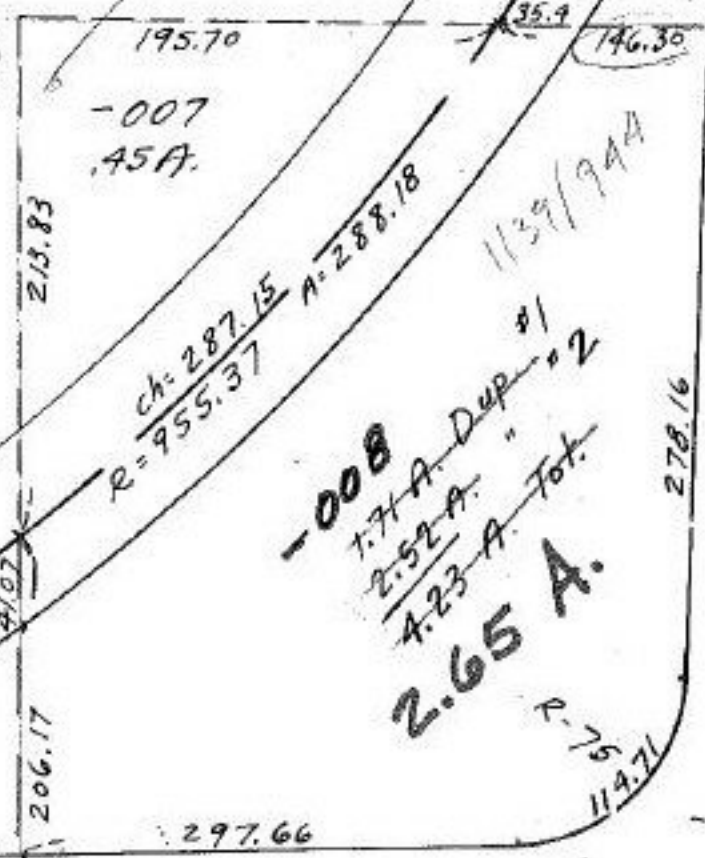
VOID
AFTER

T.H. 5/1/85

Ch = 625.10
A = 628.304

589.96

-009
1.06 A.



McGreevy
1234/647

Ch = 527.90
R = 537.97

-010
0.44 A.

KIPTON

ASHLEAND

412.50

504.46

327 RD.