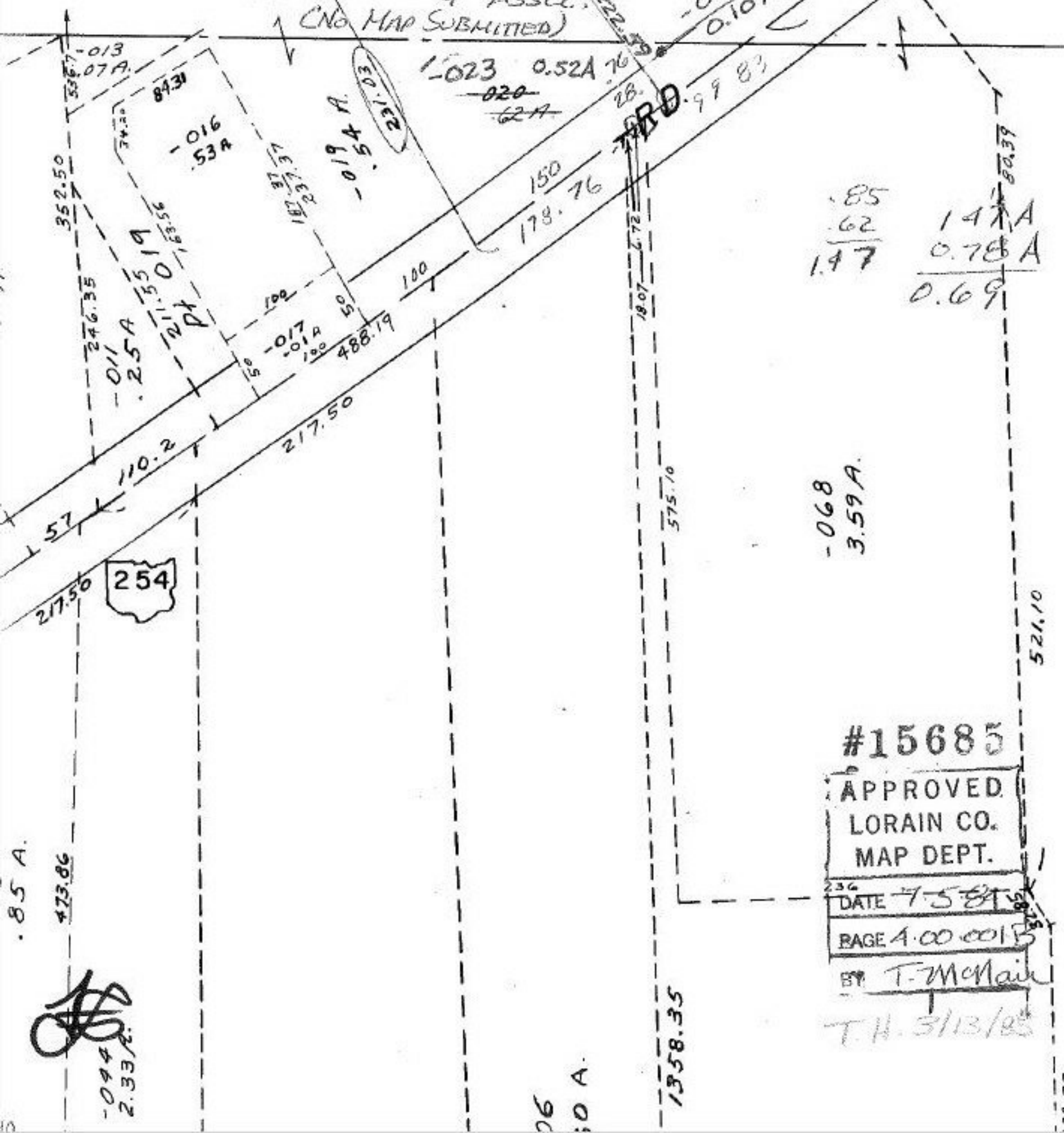


41
 242' CLOSURE $\frac{1}{135000} \times 219$ 218.95
 SURVEYED BY

KLEINODER, SCHMIDT
 & ASSOC.
 (NO MAP SUBMITTED)

EE 4-00-002-F



0.85
 0.62
 1.47
 1.47 A
 0.78 A
 0.69

-068
 3.59 A

#15685
 APPROVED
 LORAIN CO.
 MAP DEPT.
 DATE 7-5-85
 PAGE 4-00-0015
 BY T. McMain

T.H. 5/13/85

094
 2.33 A

06
 0 A

1358.35

22.62