

605.5

- 003  
36.60A.

410.50

- 004  
23.40A.

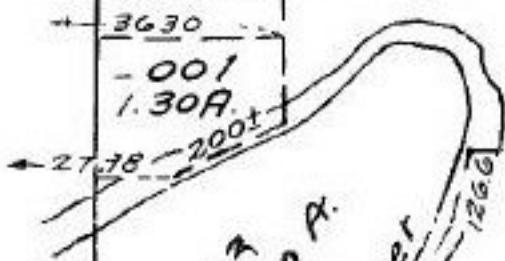
- 00  
3.00

2970  
Pt. 5.32A  
Pt. 4.91A  
SEE  
12-F  
Pt. 10.00A  
3630

- 001  
1.30A.

- 011  
31.70A.

- 005  
10.00A.



- 007  
6.00A.

256  
6789  
32389

- 013  
32.89A.

50

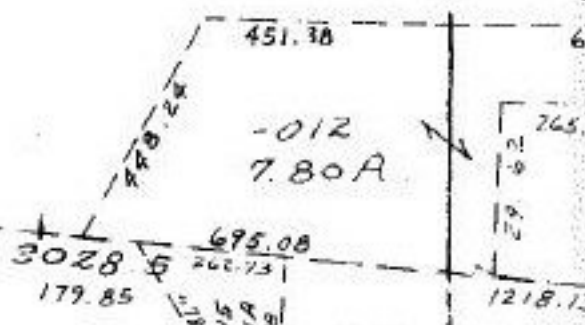
- 020  
0.95A.

Pt. -026  
Pt. 15.29A.

Pt. -023  
Pt. 17.29A.

1632.54 2223.42

- 025  
41.95A.



#15672

APPROVED  
LORAIN CO.  
MAP DEPT.

DATE 6.28.84

PAGE 12-G

BY T. McHale

VOID  
IF  
RETER