

66

-040
0.59A

190.52

-042
0.54A

169.30

010
19A

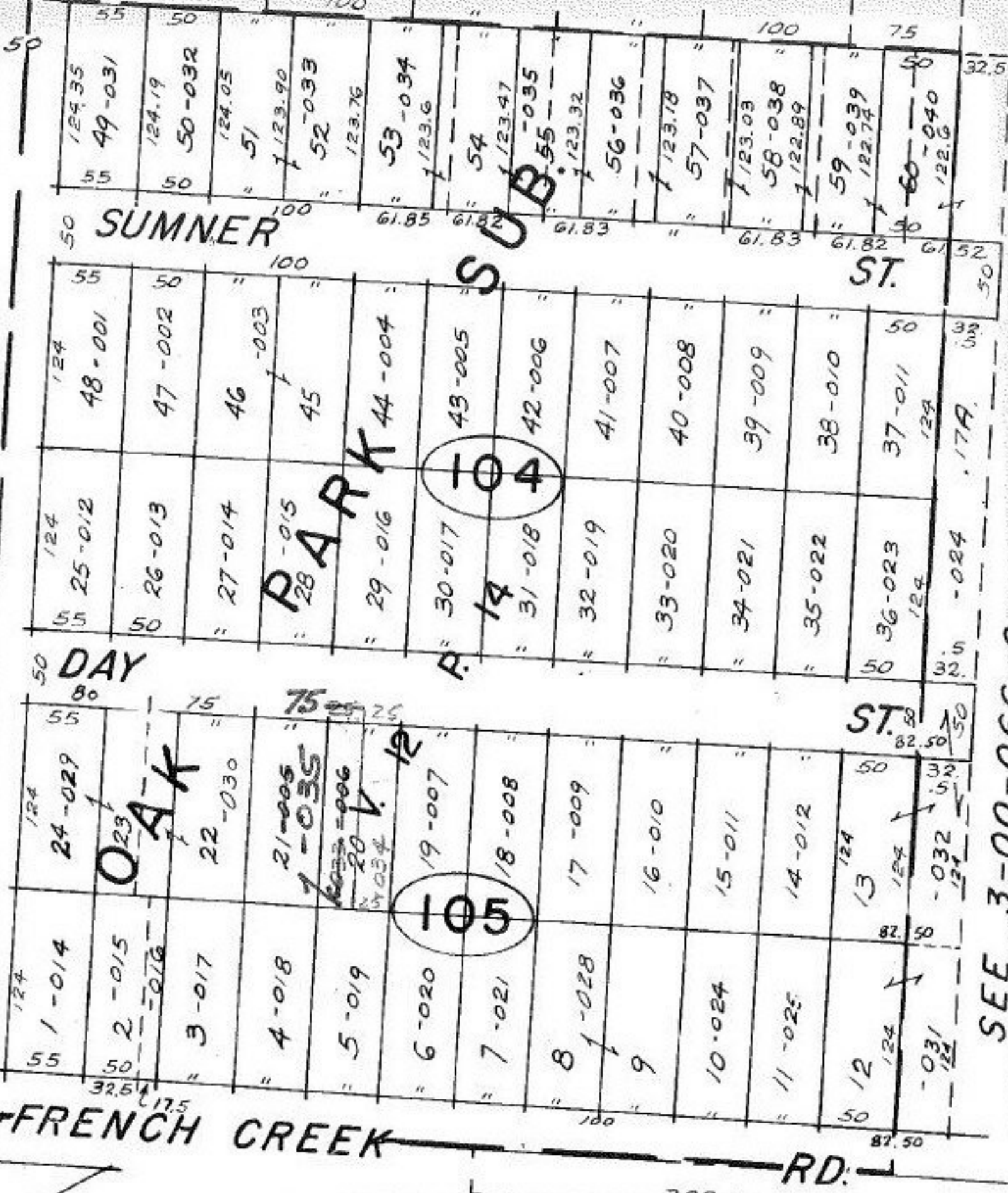
99.99
87.60

-011
1.71A

-036
1.57A

-035
9.23A

50 WRIGHT



SEE 3-00-066-C

#15635

APPROVED
LORAIN CO.
MAP DEPT.

DATE 6-20-84

PAGE 3-00-066B

BY *[Signature]*

VOID AFTER 15635

T.M.
7.29.85