

SEE 2-01-003-H

23rd ST.

#15614

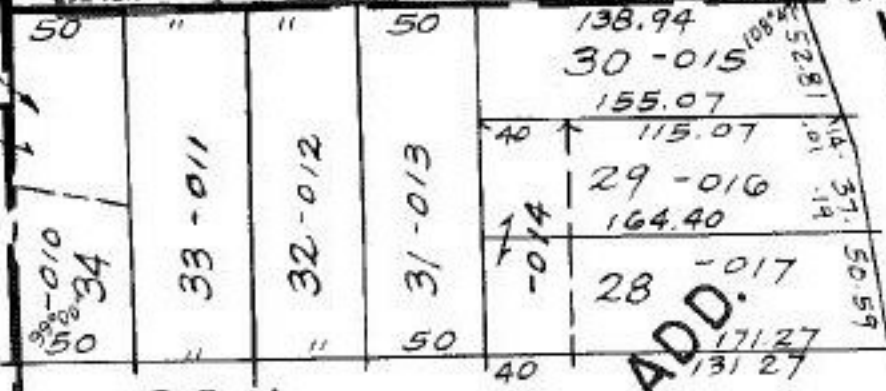
APPROVED
LORAIN CO.
MAP DEPT.
DATE 6-7-84
PAGE 2-00-093B
BY [Signature]
VOID AFTER 15614

Bldg. Only 35x69

#15614

T.H. 3/25/85

P4.02-01-003-182-023



26th

25th



SLASH SH P. 26 EAST

108

107

113

VAC. ORD 5287 12/26/83

ADD.

