

G.02 A.

N 89° 25' W

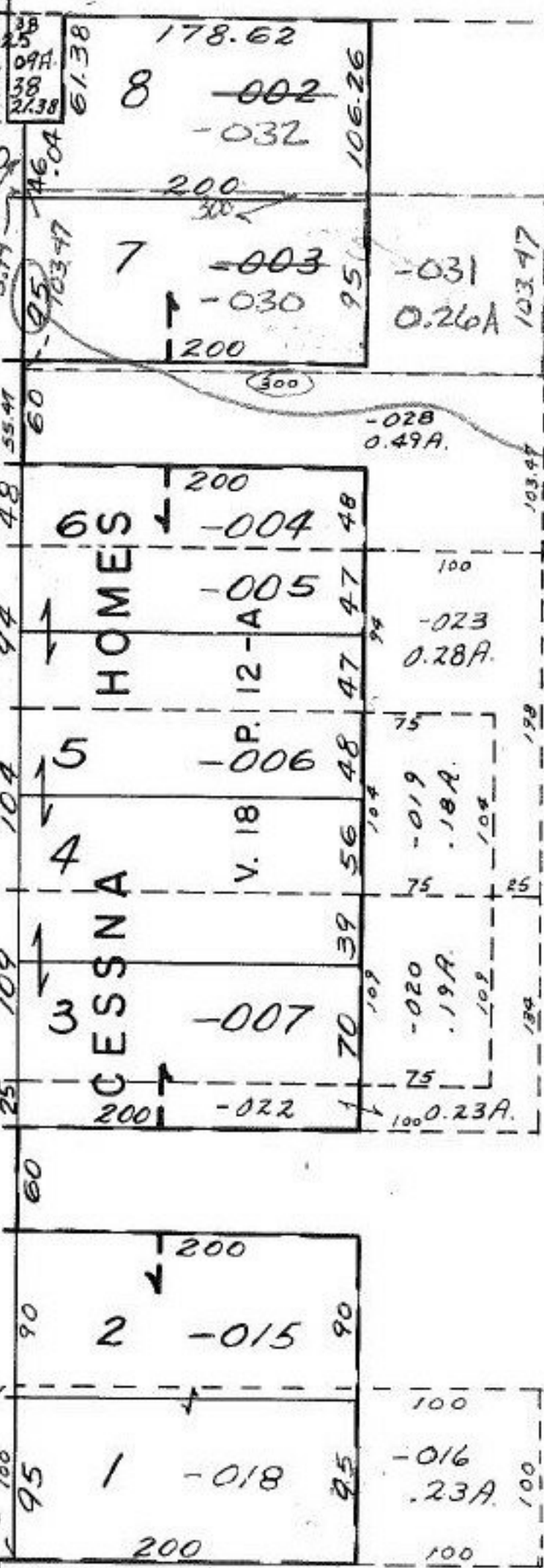
0.71  
0.15  

---

0.26

40

RC19  
8E192  
1025  
0.09A  
38  
2738



SEE SURVEY  
LAUNDON. SIMON. CAHL  
& Assoc.

-033  
28.58 A

PAT 95  
BACK

#15568

APPROVED  
LORAIN CO.  
MAP DEPT.

DATE 5-21-84

PAGE 11.00.048. A

BY T. McManis

VOID  
IF  
SIGNED

J. J. 8-8-84

S 89° 45' 30"

1454.60

SEE 11-B