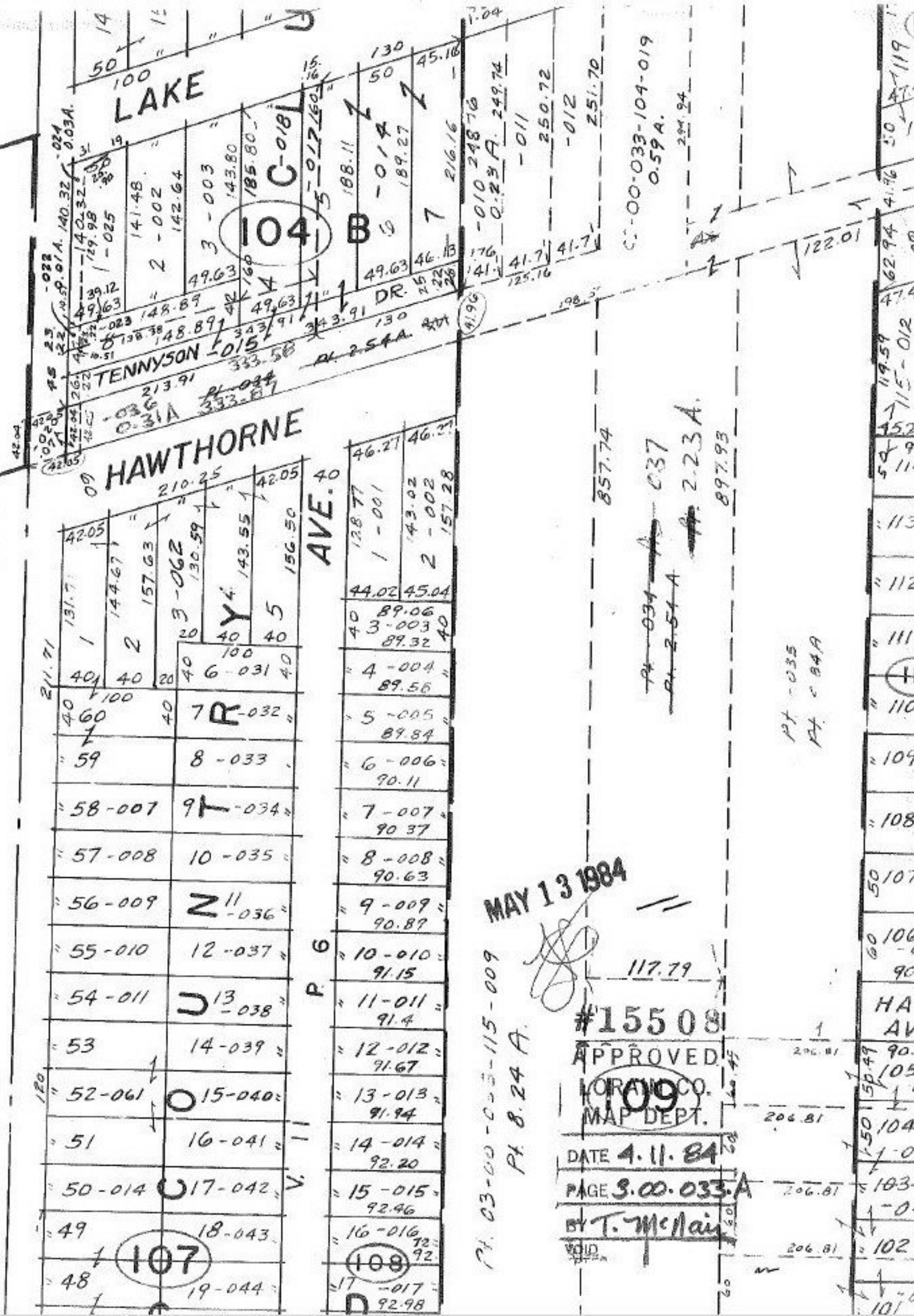


SEE 3-00-034-A



48	19-044	108	92.98
49	18-043	107	92.92
50-014	17-042	106	92.20
51	16-041	105	92.46
52-061	15-040	104	91.94
53	14-039	103	91.67
54-011	13-038	102	91.4
55-010	12-037	101	91.15
56-009	11-036	100	90.87
57-008	10-035	99	90.63
58-007	9-034	98	90.37
59	8-033	97	90.11
60	7-032	96	89.84
40	6-031	95	89.56
40	5	94	89.32
40	4	93	89.06
40	3	92	88.77
40	2	91	88.49
40	1	90	88.21

MAY 13 1984

PT. 03-00-033-115-009
PT. 8.24 A.

#15508
 APPROVED
 MORNING CO.
 MAP DEPT.
 DATE 4.11.84
 PAGE 3.00.033.A
 BY T. McLean

PT. 035
PT. 034A

101	101.0
102	101.0
103	101.0
104	101.0
105	101.0
106	101.0
107	101.0
108	101.0
109	101.0
110	101.0
111	101.0
112	101.0
113	101.0
114	101.0
115	101.0
116	101.0
117	101.0
118	101.0
119	101.0
120	101.0