

301

RD. 730  
(60)

LORAIN COUNTY  
TAX MAP DEPARTMENT  
006  
32.50 A.

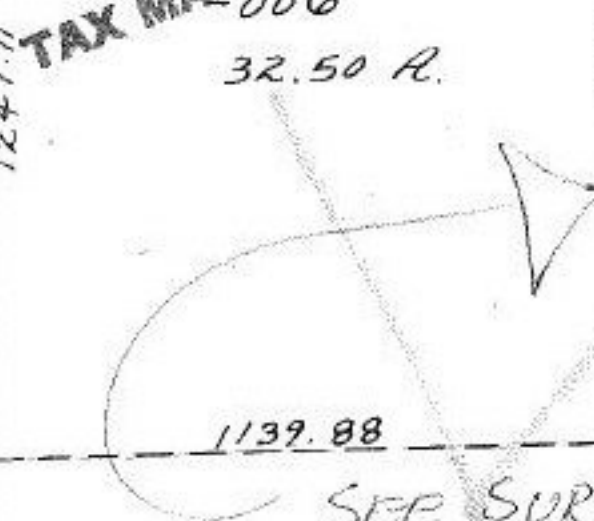
1247.11

1139.76

333.0

400.63

-008  
6.51 A.



1237.16

-010  
9.32 A

1234.42

955.0

-011  
8.75 A

6

429.55

480

677.80

50.50

-004  
5.00 A.

616.20

110

400.17

521.95

353

-012  
8.77 A.

302.50

433.23

1139.88

324.41

279.42

1010.55

SEE SURVEY MCGLINCHY & ASSOC.

-002  
30.00 A.

-003 4.65 A.

-009  
15.00 A.

2490.71

-008  
15.00 A.

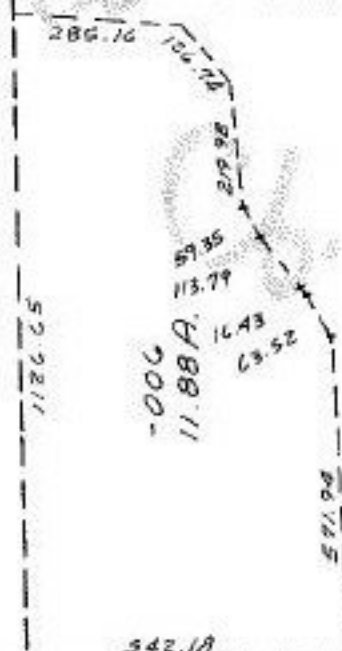
2487.99

STREET #15458  
CARBON PULVER  
WRONG PLACE

109

-007  
50.46 A.

-002  
10.00 A.



-006  
11.88 A.

240  
-004  
2.66 A.  
240

RD. 684  
(60)

#15459

APPROVED  
LORAIN CO.  
MAP DEPT.

DATE 3.5.84

PAGE 19-B

BY T. McNaie

VOID  
IF  
29. 8-15-84

542.18

1592.17

240

1379.45

262.51

262.51  
262.53  
1864.04

300 300 300 300