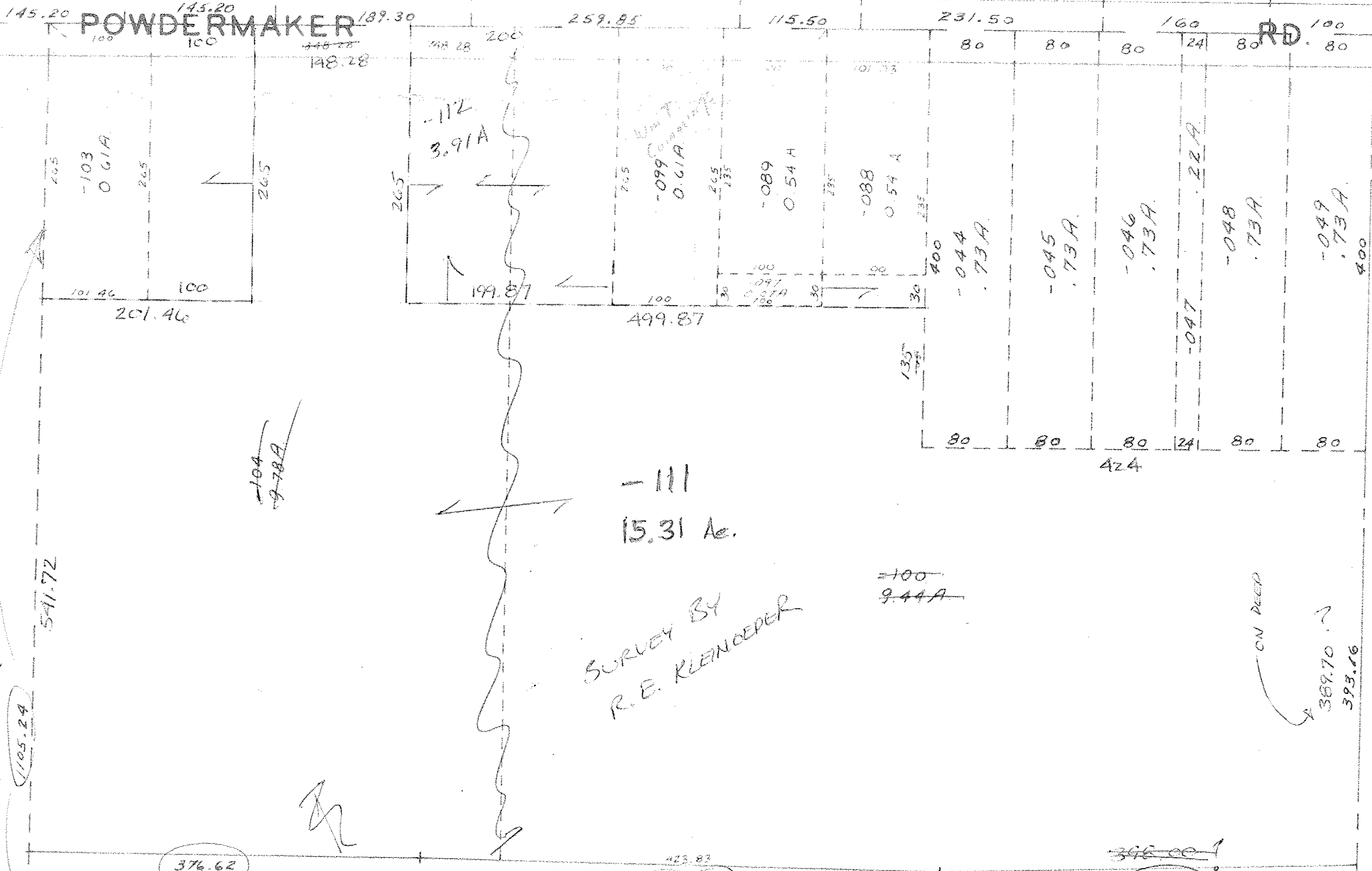


POWDERMAKER

RD.



SURVEY BY
R.E. KLEINCEPER

-111
15.31 Ac.

INTERSTATE

#15455

APPROVED
LORAIN CO.
MAP DEPT.

DATE 3.9.84

PAGE 4.00.009. H

BY T. McMain

VOID

T.H. 3/13/85

FROM LOR. - 90 - 19.95

Pg. 7

-073

7.82 A.

90

#15455

APPROVED
LORAIN CO.
MAP DEPT.

DATE 3.9.84

PAGE 4.00.009. H

BY T. McMain

VOID

[Handwritten signature]

Stone