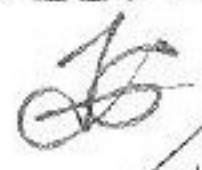


-0.004319
-0.005849
8.304633 Ac.

2572.18'
-005
29.00 A.

$\frac{1}{333,333}$

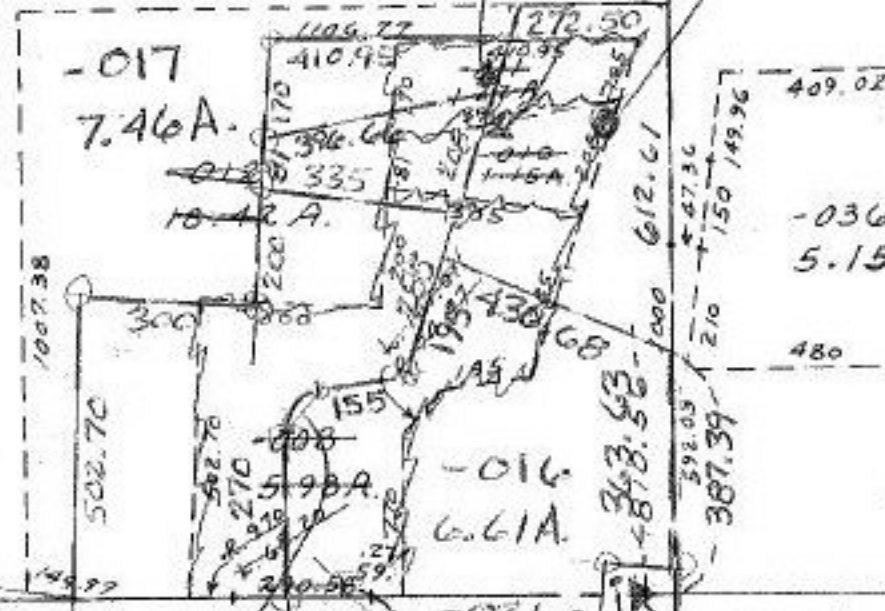


-001
39.00 A.

(500)
3061.30

82

-007
75.93 A.



ST. 004
2.00A
438.89

315
-006
2.05A
50 R+T 120 L 31.42
265

CH 7-25-86
#15434

APPROVED
LORAIN CO.
MAP DEPT.
DATE 1-23-84
PAGE 15-E
BY T. McMain

R=74.77
L=107.01
T=65.00

-021
1.62A
308.86
92.73
R=120.00
A=191.15
T=92.01
-013
0.09 A
CORR ONLY

GONAL

SEE CDIT #15