

002
0.64 A.

003
0.42 A.

370.91
387.70

0.32 A.

005
1.51 A.

012
1.10 A.

387.70

387.70 .22 A.

0.1 A.

1185.10

177.10

58

919.70

115

APR 27 1984

#15411

APPROVED
LORAIN CO.
MAP DEPT.

DATE 12-28-83

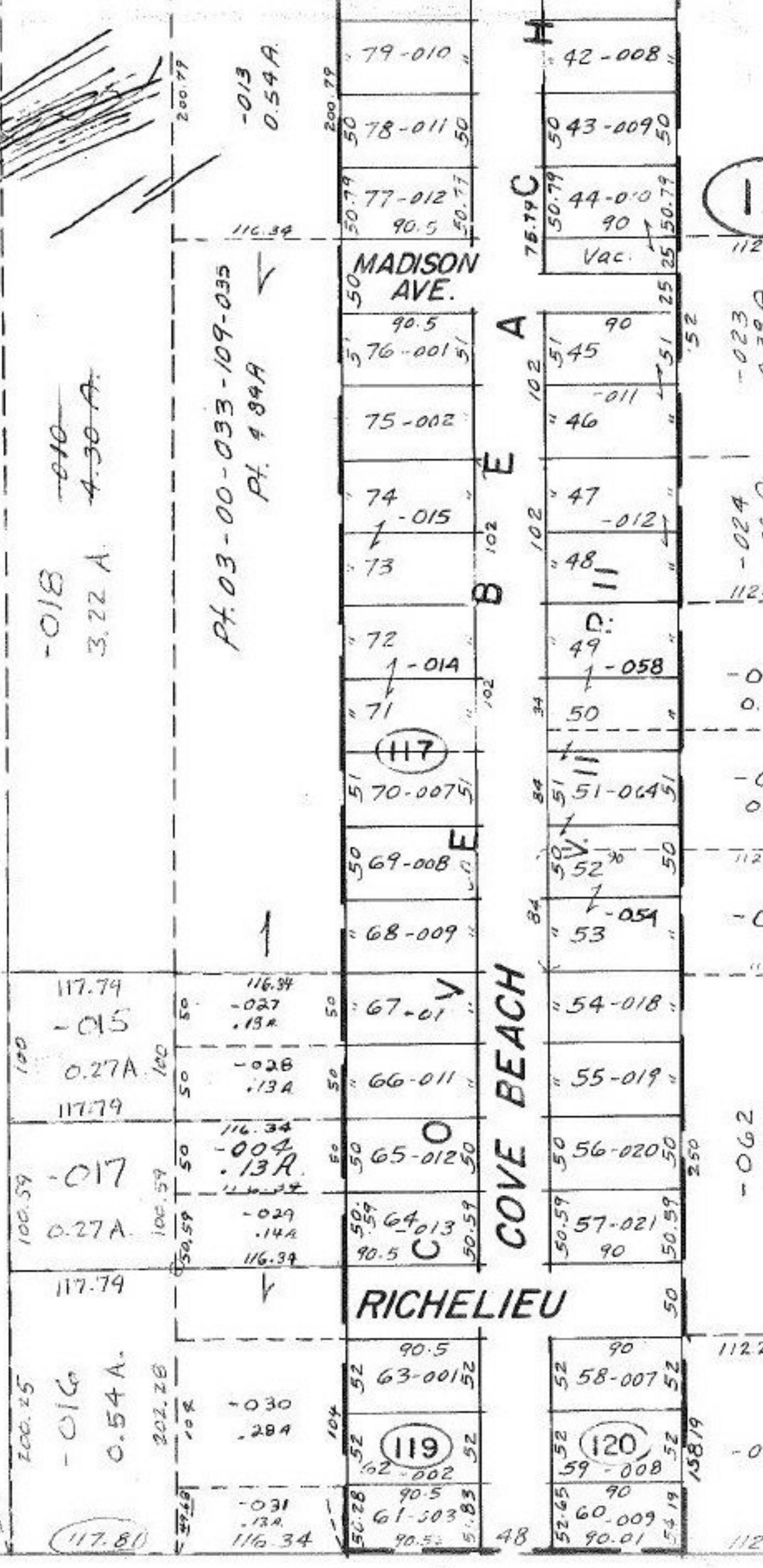
PAGE 3.00033-B

BY T. McNeil

VOID
STAMP

SEE SURVEY - W.H. B. BARTON

Pt. -009
Pt. 8.24 A.



187.70

119.33

117.81

116.34

48

112.