

107

APPROVED LORAIN CO. MAP DEPT.	DATE 12-1-83	PAGE 6-46	BY J. J. Eckhart	VOID AFTER 15380
-------------------------------------	--------------	-----------	------------------	------------------

MAR 30 1984

15380

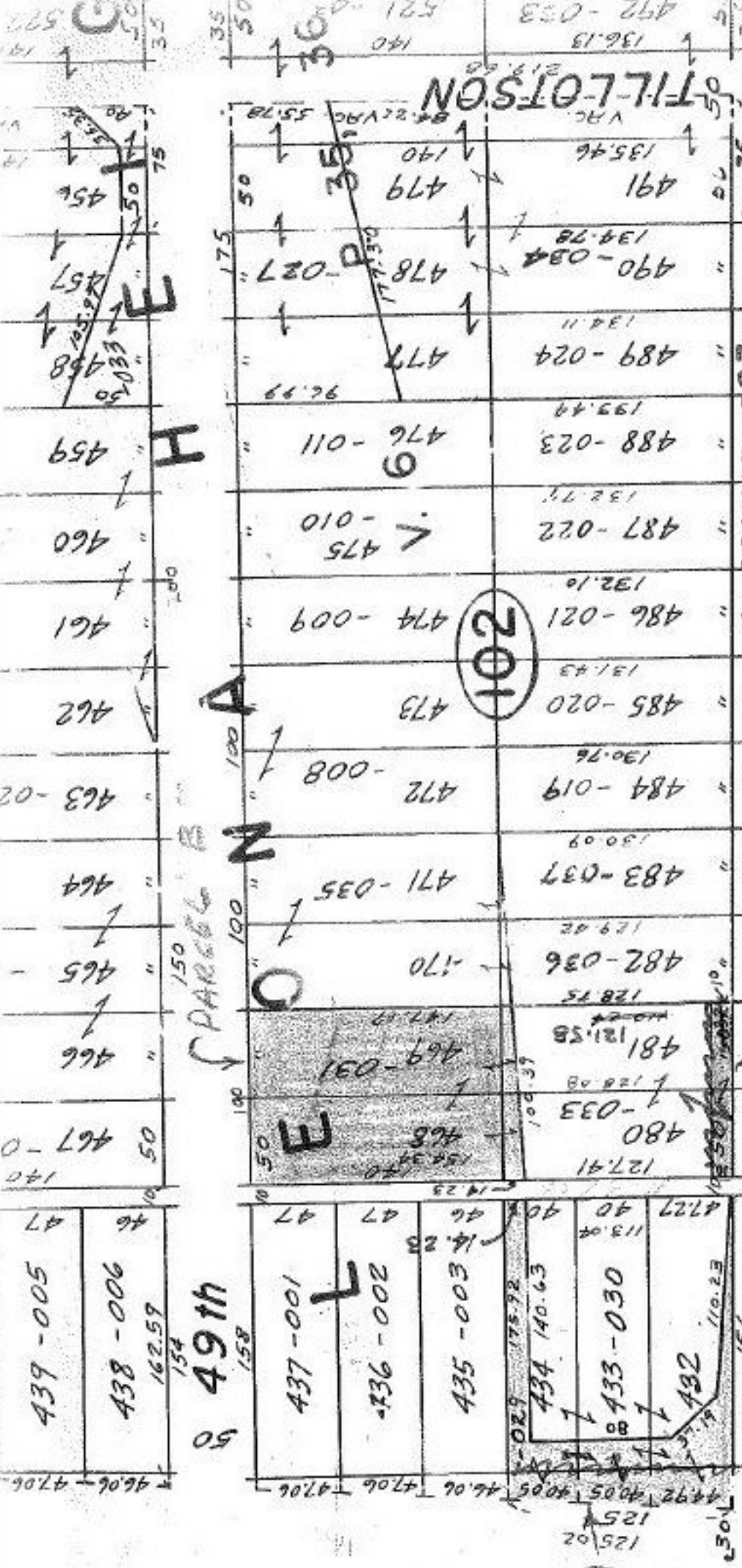
Parcel "D"
EASEMENT ONLY
Should Not Have
Been Transferred
To City of Elyria

add correct
06-24-031-102-033 from
105 X 110.24 To 105 X 121.58

MIDWAY

DROP 06-24-031-102-032 FROM DUPLICATE.

TWP. 9-13-65
CITY OF 67-37



50 49th

PARCEL A

94A

581.37