

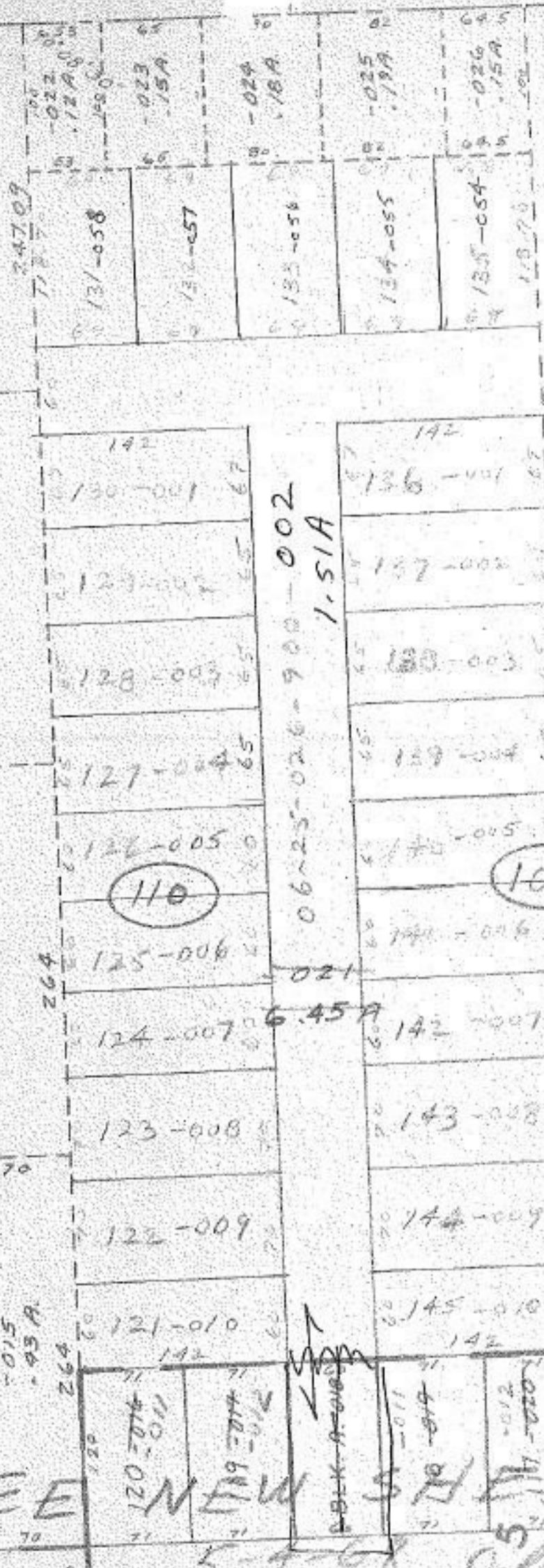
6

71
70
70
70
71

96A
-013
-48A
-014
-42A
-015
-43A
264

10

SEE NEW SHEET
ST. 50
5-4-68
S. W. Hayward



#1538
APPROVED
LORAIN CO.
MAP DEPT.
DATE 2-14-68
6-71
BY N. Hayward

1-25-87
90 20 05