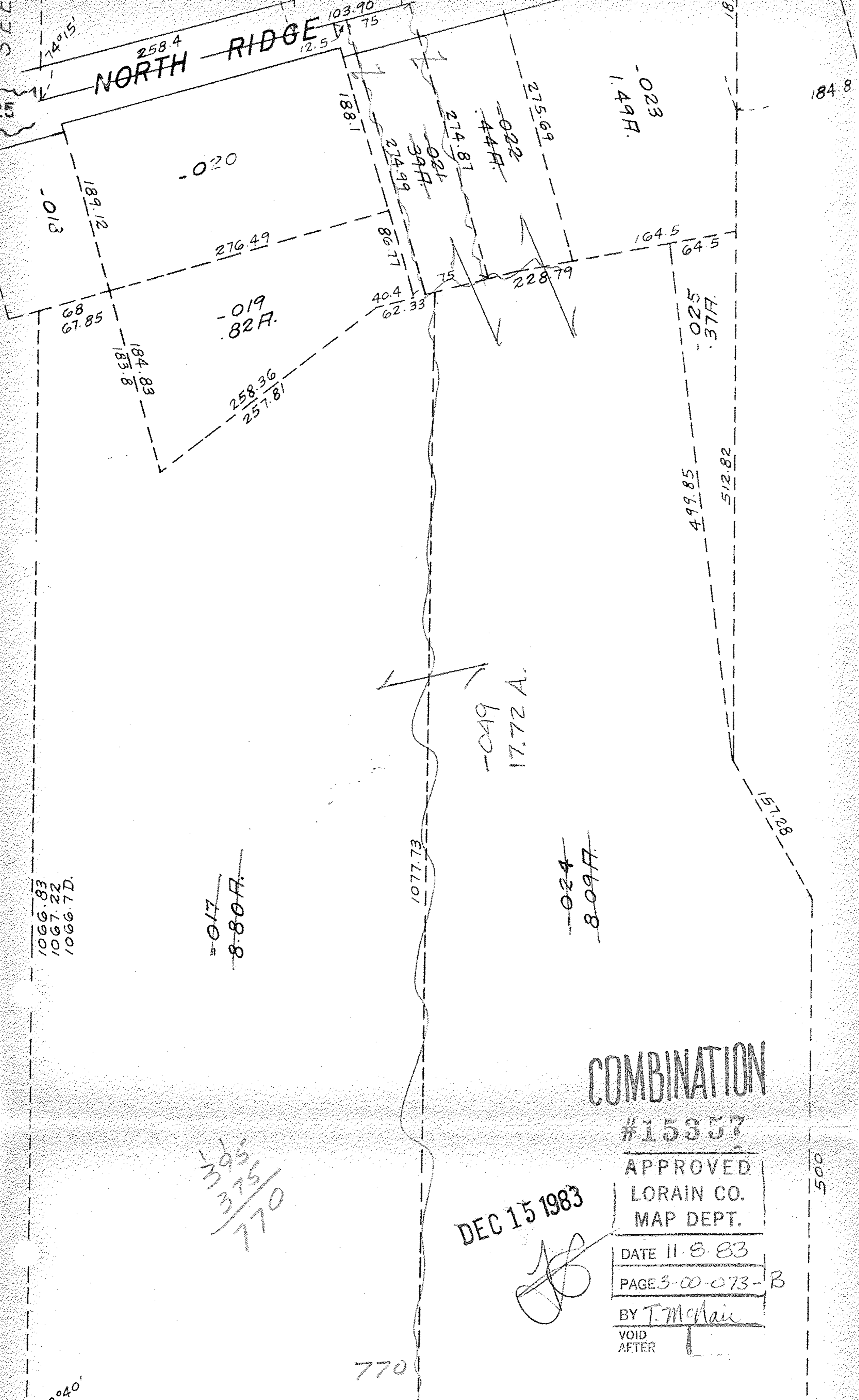


NORTH RIDGE



770

88°40'

395

770

375

505

184.8

181

COMBINATION

#15357

APPROVED  
LORAIN CO.  
MAP DEPT.

DATE 11-8-83

PAGE 3-00-073-B

BY T. McNeil

VOID  
AFTER

DEC 15 1983

395  
375  
770

~~710~~  
~~808.8~~

~~420~~  
~~809.7~~

-049  
17.72 A.

~~025~~  
~~377.7~~

~~023~~  
~~1,497.7~~

~~022~~  
~~447.7~~

~~021~~  
~~397.7~~

-019  
827.7

-013

-020

1066.83  
1067.22  
1066.7D.

1077.73

228.79

164.5

499.85

512.82

64.5

40.4  
62.33

86.77

188.1

75

103.90  
12.5  
75

14°15'

258.4

4