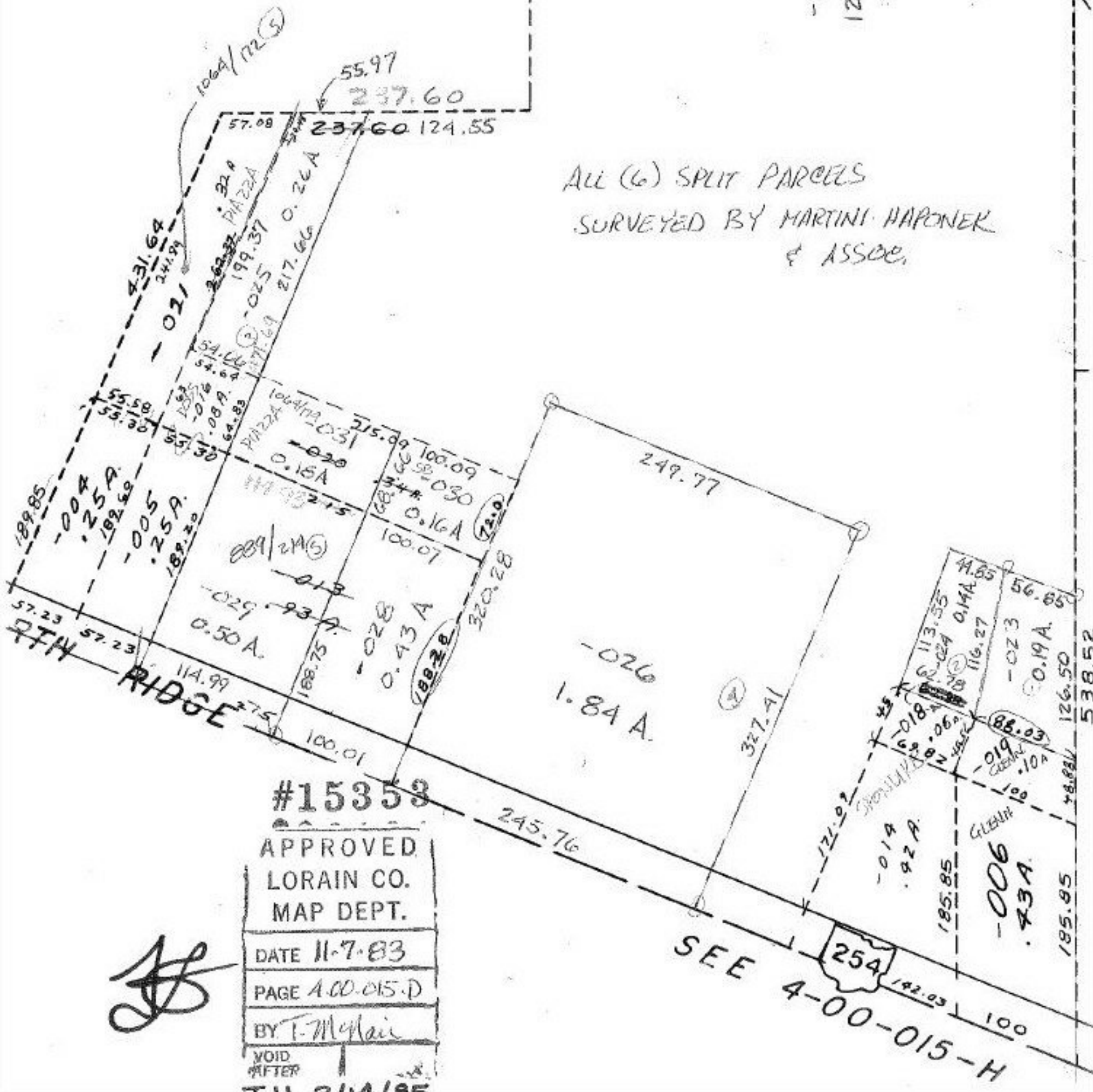


-022
15.99A
-027
12.96A

168840

ALL (6) SPLIT PARCELS
SURVEYED BY MARTINI HAPONER
& ASSOC.



#15353

APPROVED
LORAIN CO.
MAP DEPT.

DATE 11-7-83

PAGE A-00-015-D

BY T. McNeil

VOID
AFTER

T.H. 3/14/85

Handwritten signature/initials

SEE 4-00-015-H
254
142.03
100