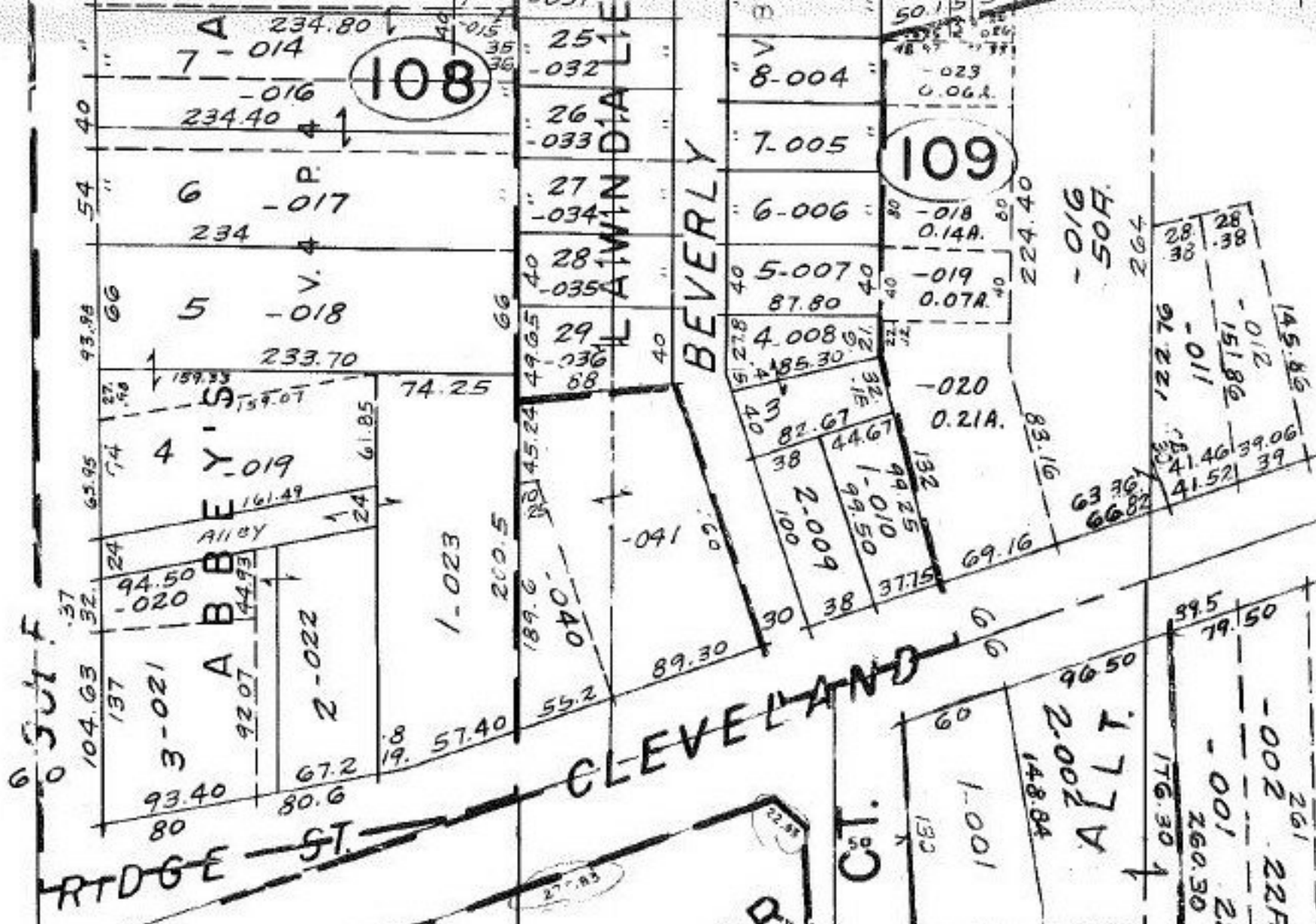


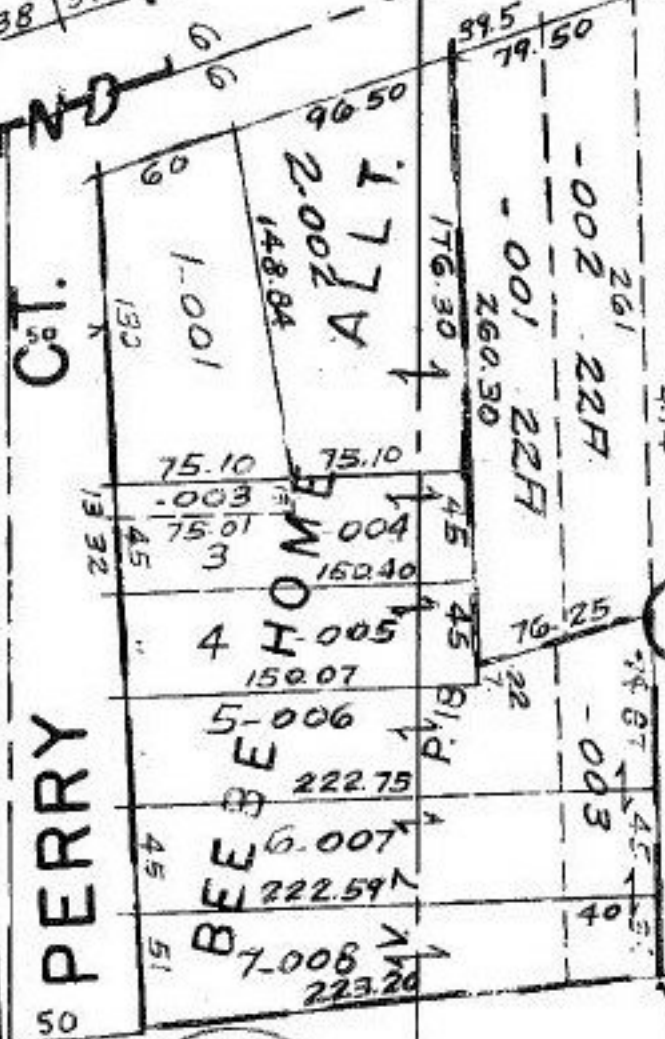
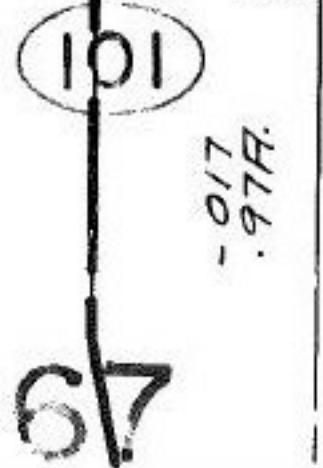
SEE 6-103



BEVERLY
CLEVELAND
RIDGE ST.



WENT INTO PLAT
ST. VACATION OF MALCOLM COURT - 78-112
LEWIS COURT - 78-111



101
#15334
APPROVED
LORAIN CO.
MAP DEPT.
DATE 10-28-83
PAGE 6-104
BY T. McMan
VOID
1984

MAR 30 1984

67

68

69

001