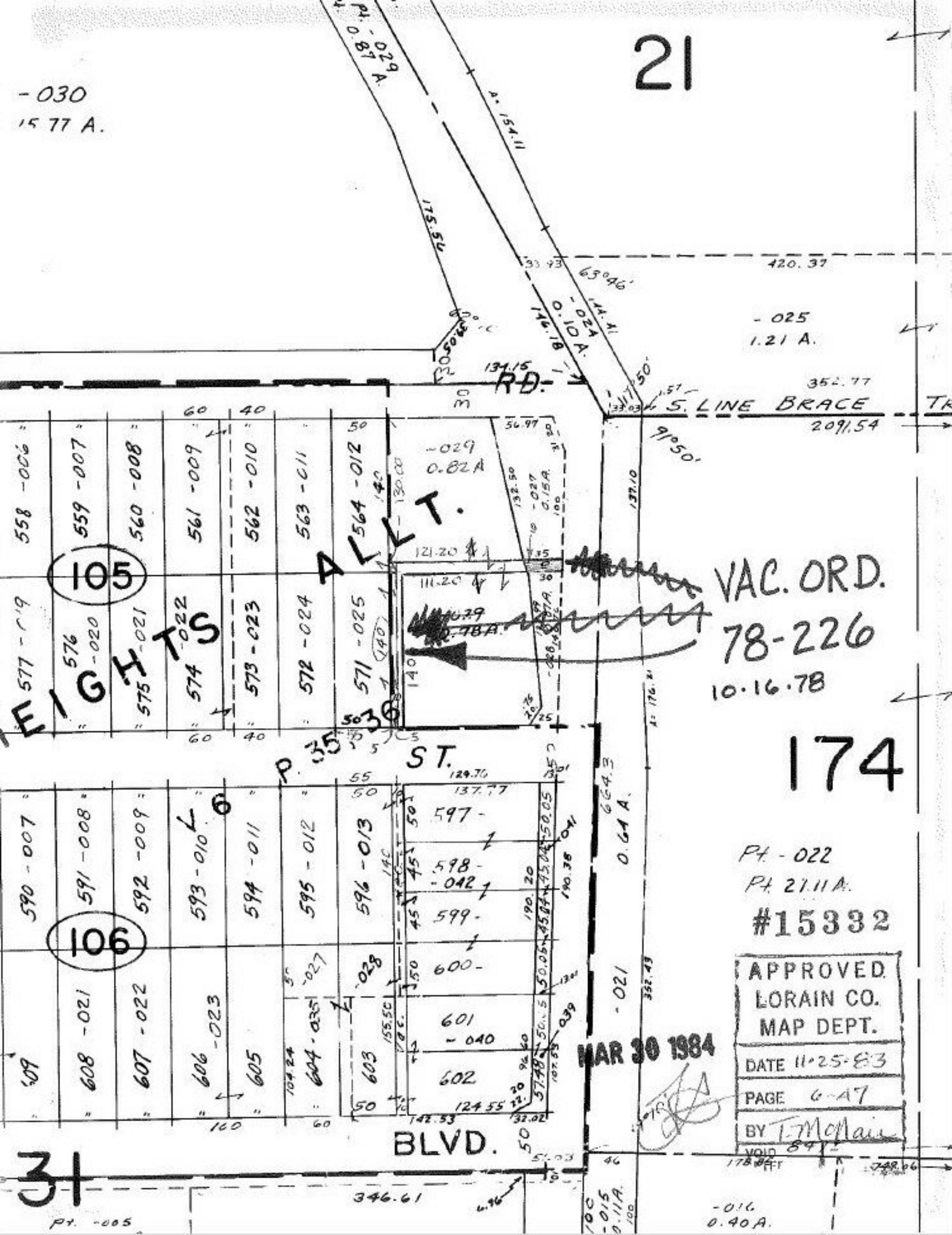


- 030
15 77 A.

21



VAC. ORD.
78-226
10.16.78

174

Pt. - 022
Pt. 21.11A.
#15332

APPROVED.
LORAIN CO.
MAP DEPT.
DATE 11-25-83
PAGE 6-47
BY T. McMain

MAR 30 1984

31
Pt. - 005