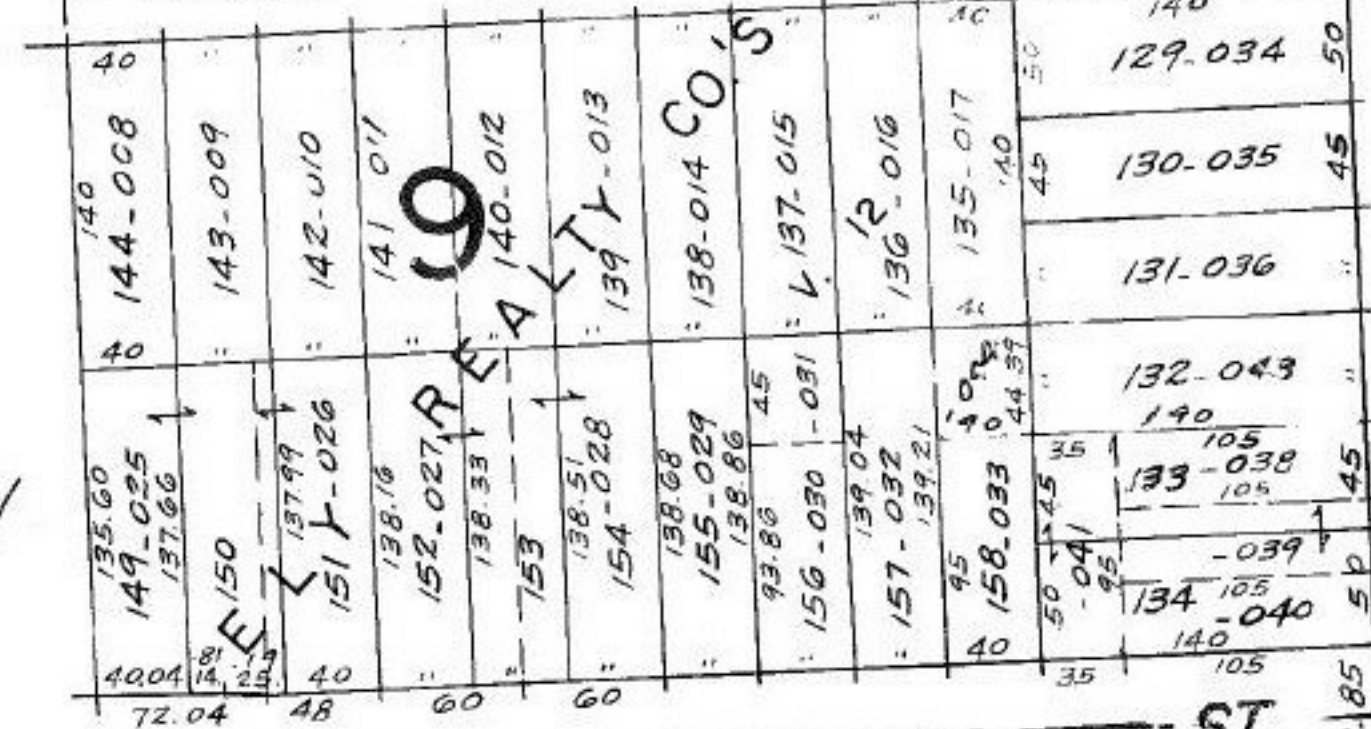
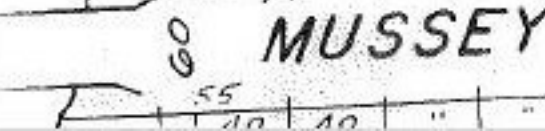
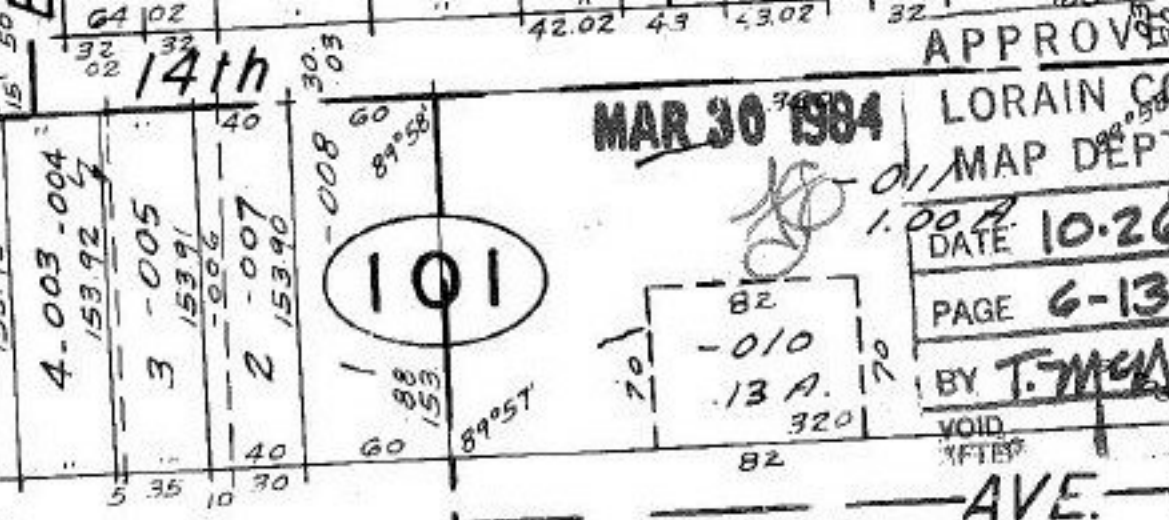
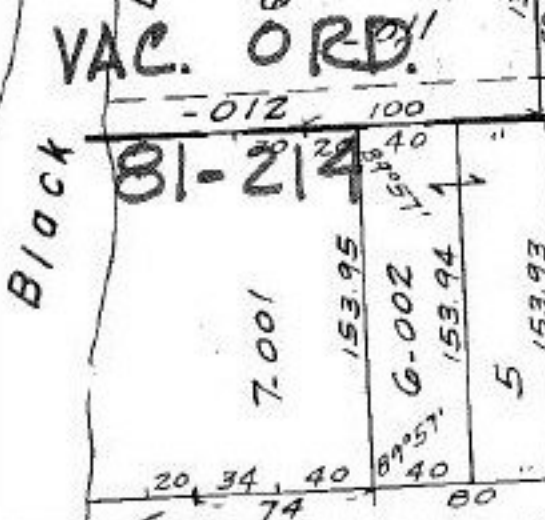
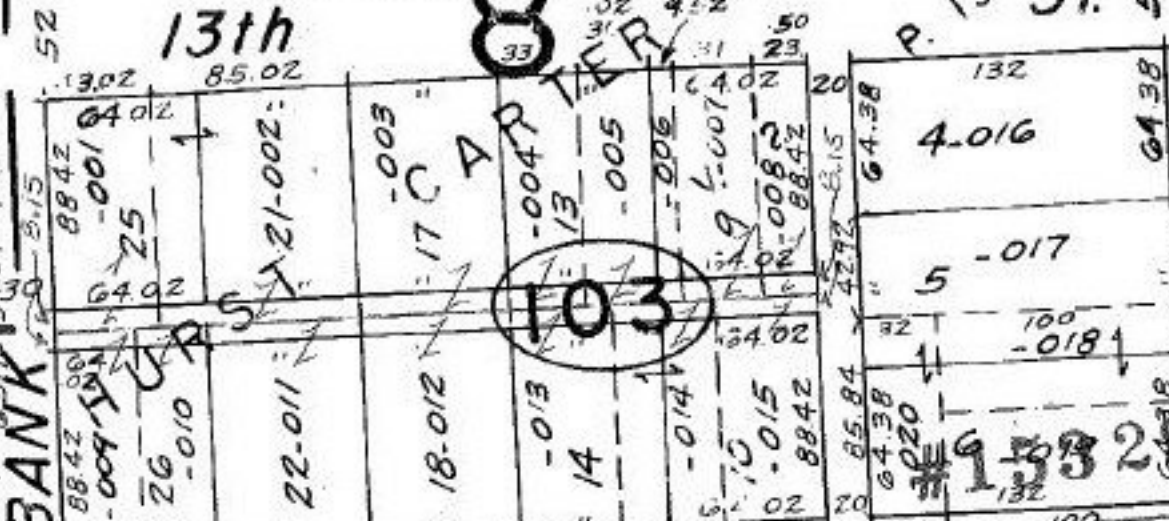


BIRCH

Vac Pt - 042 W. S.



12th



Black River  
 VAC. ORD. 81-214  
 VAC. ORD. 81-463  
 W. HYLAND  
 BANK  
 MUSSEY

102

103

101

MAR 30 1984

LORAIN CO. MAP DEPT.

DATE 10-26-83

PAGE 6-137

BY T. McNeil

VOID AFTER

AVE.