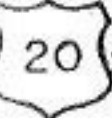
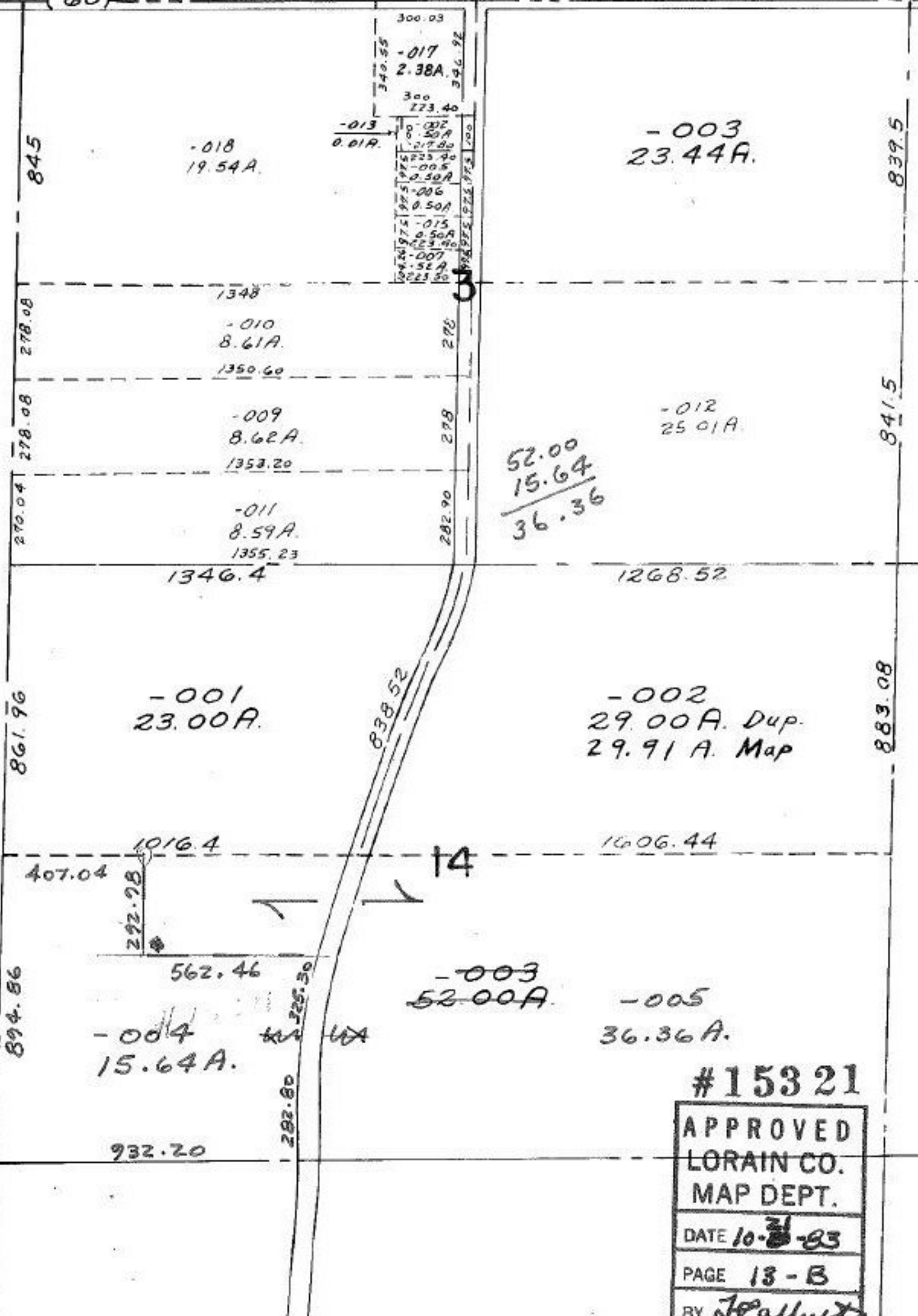


OBERLIN - NORWALK



42.8.50 (60) 281.64 -016 4.11A 300 -015 3.00A 435.60



52.00
15.64

36.36

#15321
APPROVED
LORAIN CO.
MAP DEPT.
DATE 10-21-83
PAGE 13-B
BY J. Balliet
VOID AFTER 15321
T.H. 7/31/84

-001
67.95A.