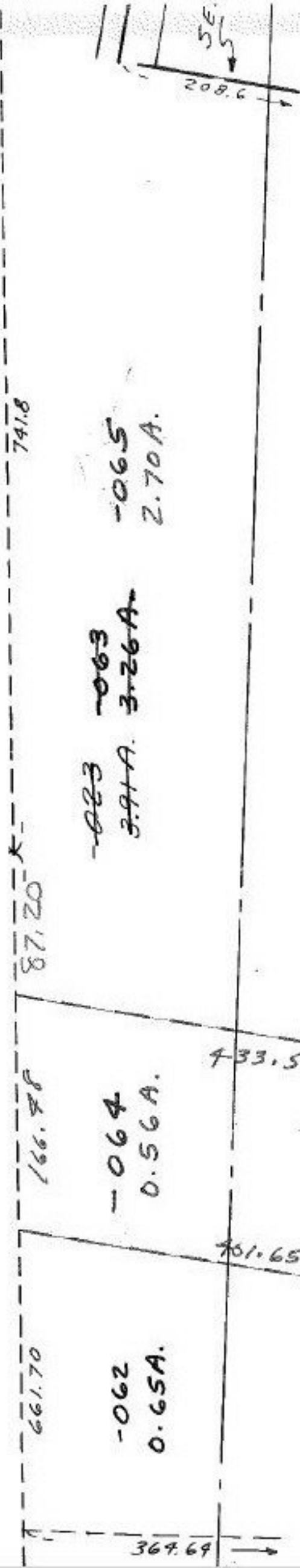


021

19.04 A.

~~263.60~~
~~166.48~~
~~87.20~~

102



$$\frac{3.26}{2.70}$$

9-00-002-A

#15917

APPROVED LORAIN CO. MAP DEPT.	
DATE 10-20-83	
PAGE 900-001-B	
BY <i>[Signature]</i>	
VOID AFTER	15817

4-9-86