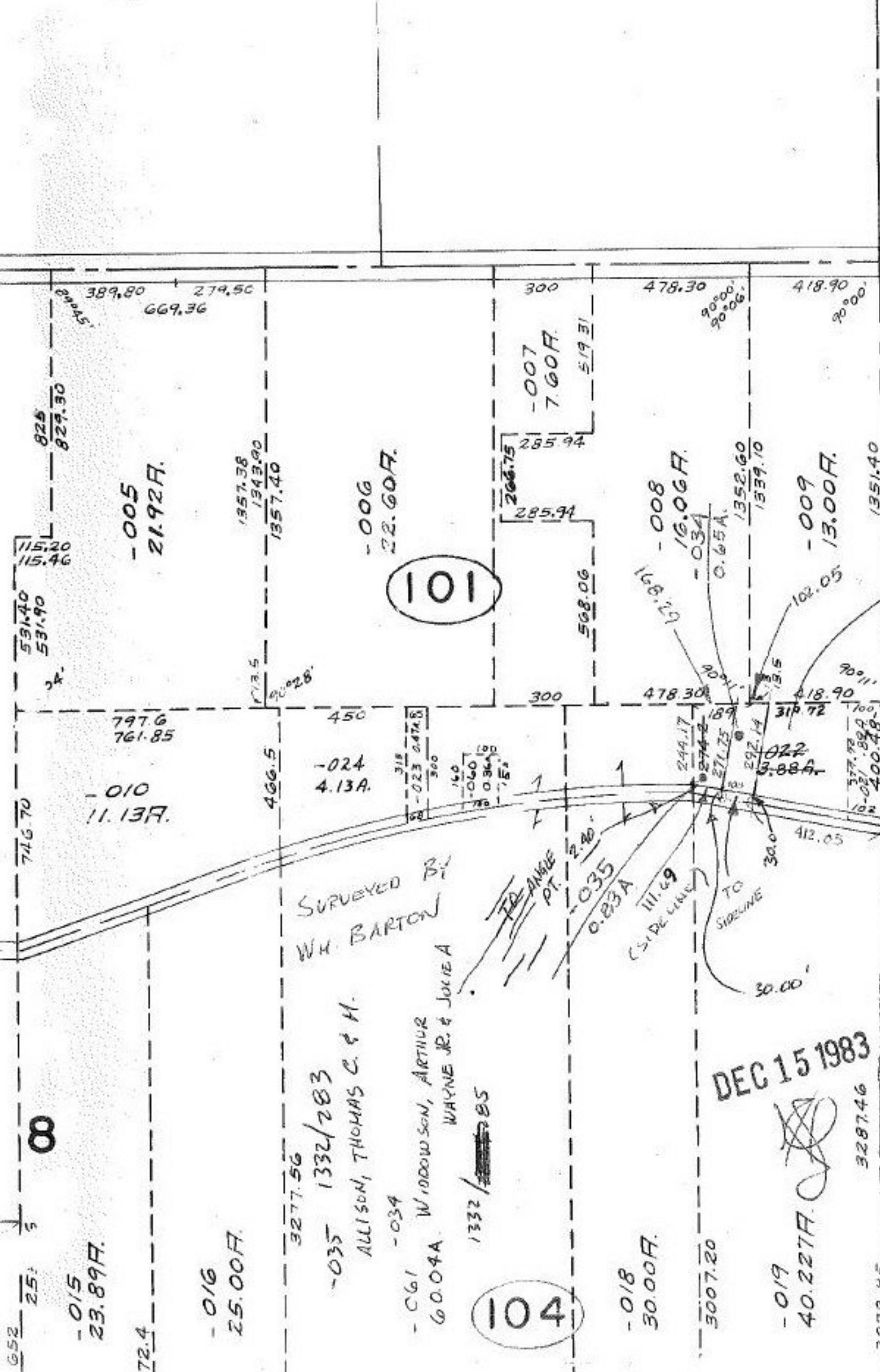


SEE



REMAINDER
 -032
 3.52A
 -036
 2.04A

SEE

SURVEYED BY
 W.H. BARTON

-035 1332/283
 ALLISON, THOMAS C. & H.
 -061
 WOODSON, ARTHUR
 WAYNE JR. & JOLIE A
 60.04A
 1332/285

DEC 15 1983

#15300
 APPROVED
 LORAIN CO.
 MAP DEPT.
 DATE 10-14-83
 PAGE 4-B
 BY T. McHain
 VOID
 AFTER

104

101

∞

4