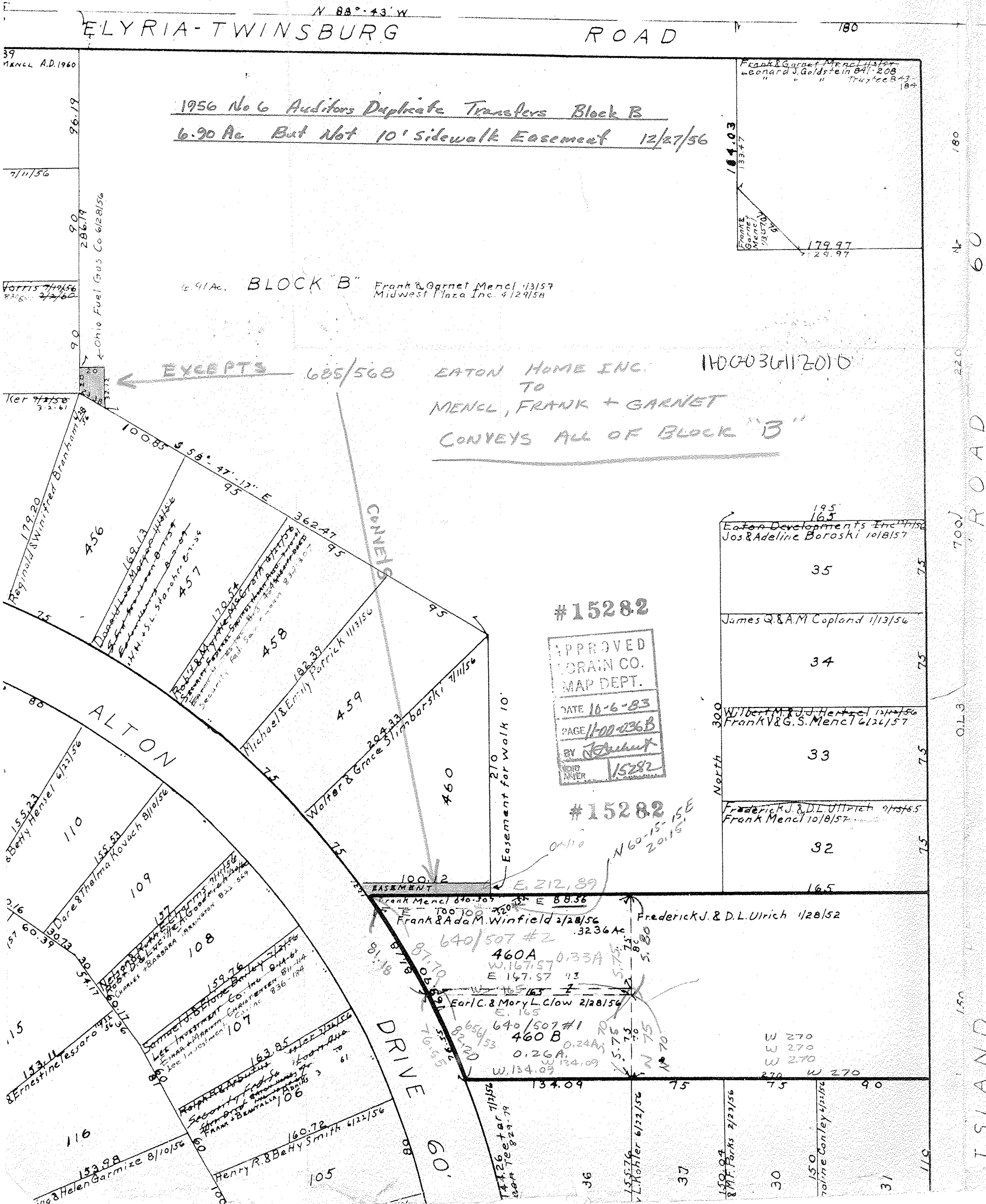


TON HOMES SUBDIVISION

ON TWP. O.L. 36 VOL. 17 Pg. 38
Blank Eaton Homes Inc.

10-B



1967 No. 21
11-00-036-112-010 EATON HOMES INC. Sidewalk Easement 10 x 100
106-013 " " " Utility Easement 20 x 330
113-015 " " " Utility Easement 20 x 330

1968 No. 13 Aud. Dup. Pencil in Ohio State of

640/507 ULLRICH, FREDERICK J + DORIS L. To
EATON HOMES INC. 9/13/55
1955 No. 6 Auditors Dup. Transferred Two Parcels (0.04 Ac. Straight Trans + 0.55 Ac. out of 1.48 Ac.)

656/53 EATON HOMES INC. To CLOW, EARL C.
& MARY L. 2/24/56
1955 No. 6 Aud. Dup. Transferred 0.24 Ac.

656/55 EATON HOMES INC. To WINFIELD, FRANK
& ADA M. 2/24/56
1955 No. 6 Aud. Dup Transferred 0.32 Ac. DROPPING
0.03 Ac. OFF of Duplicate.