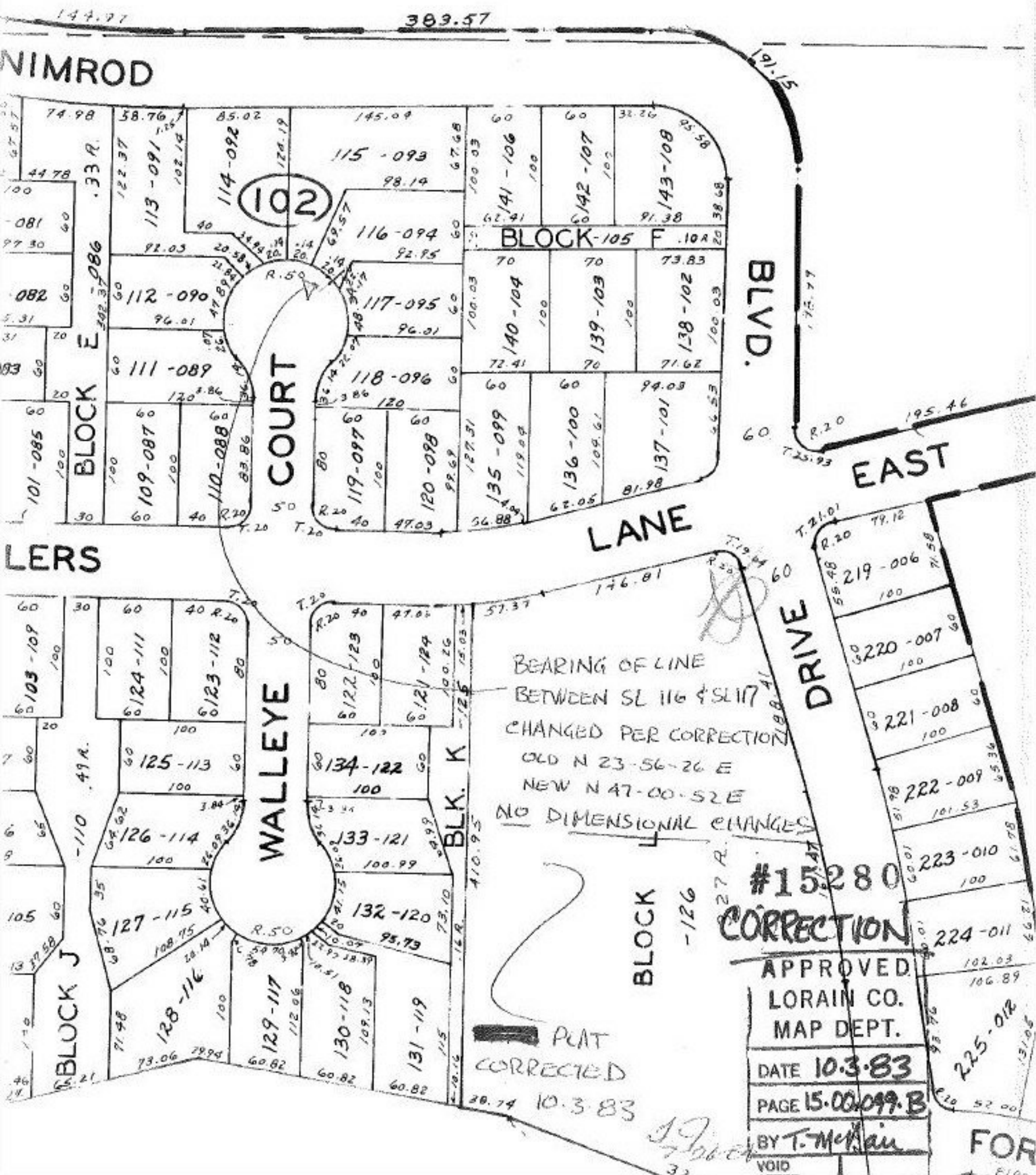


MAP CORRECTION ONLY

SEE 15-E



BEARING OF LINE
 BETWEEN SL 116 & SL 117
 CHANGED PER CORRECTION
 OLD N 23-56-26 E
 NEW N 47-00-52 E
 NO DIMENSIONAL CHANGES

#15280
 CORRECTION

APPROVED
 LORAIN CO.
 MAP DEPT.

DATE 10.3.83

PAGE 15.00.099.B

BY T. McMan

PLAT
 CORRECTED

10.3.83

FOR