

- 003
12.00 A.

- 005
25.00 A.

- 006
30.17 A.

- 004
13.00 A.

PARCEL SURVEYED BY
LAUNDON-SIMON-CAHL & ASSOC.

- 001
96.00 A.

43

- 021
4.70 A.

- 020
5.03 A.

- 023
3.49 A.

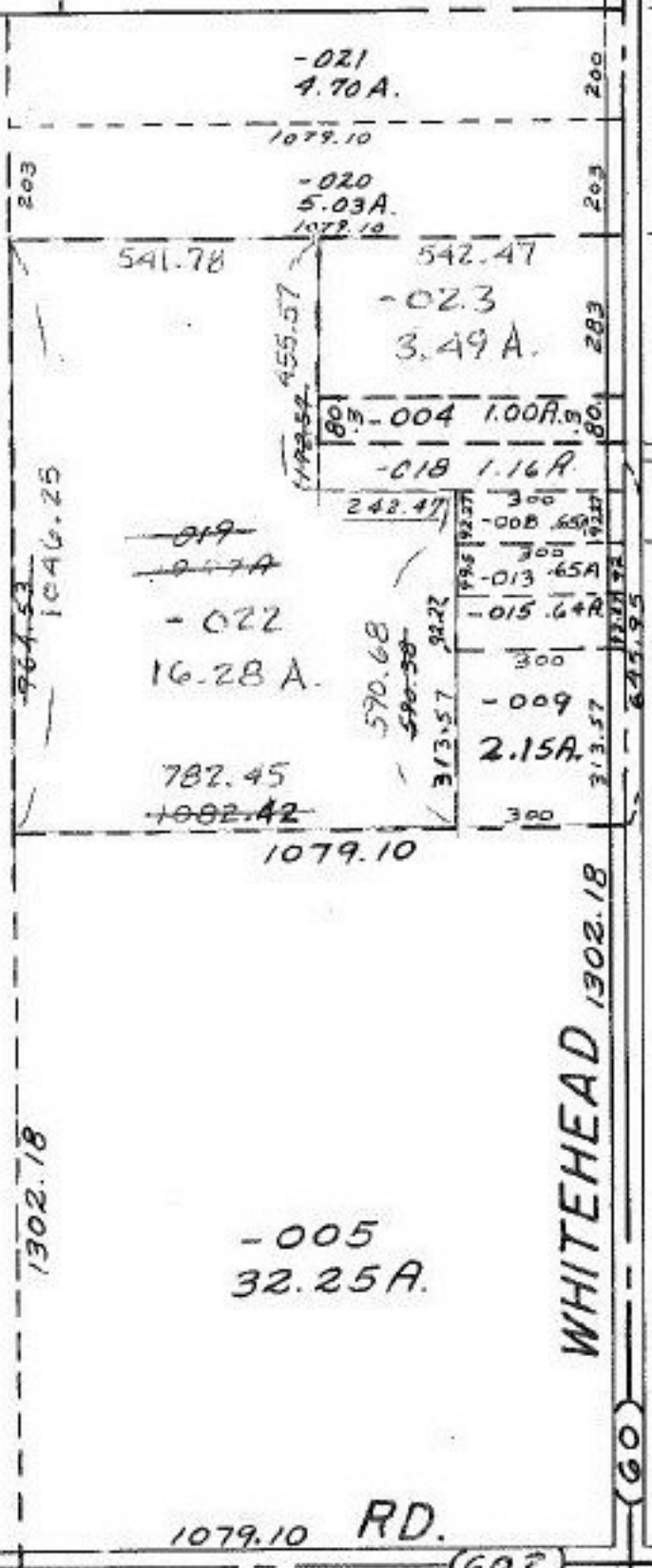
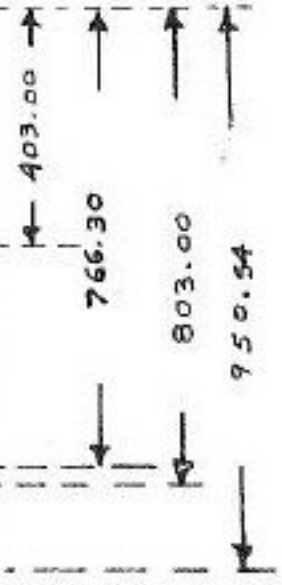
- 004
1.00 A.

- 018
1.16 A.

- 022
16.28 A.

- 009
2.15 A.

- 005
32.25 A.



#15278

APPROVED
LORAIN CO.
MAP DEPT.

DATE 9-29-83

PAGE 15-A

BY T. McMan

VOID
METER

WHITEHEAD RD.

1079.10 RD.



18 THRU 23, 38 THRU 43

