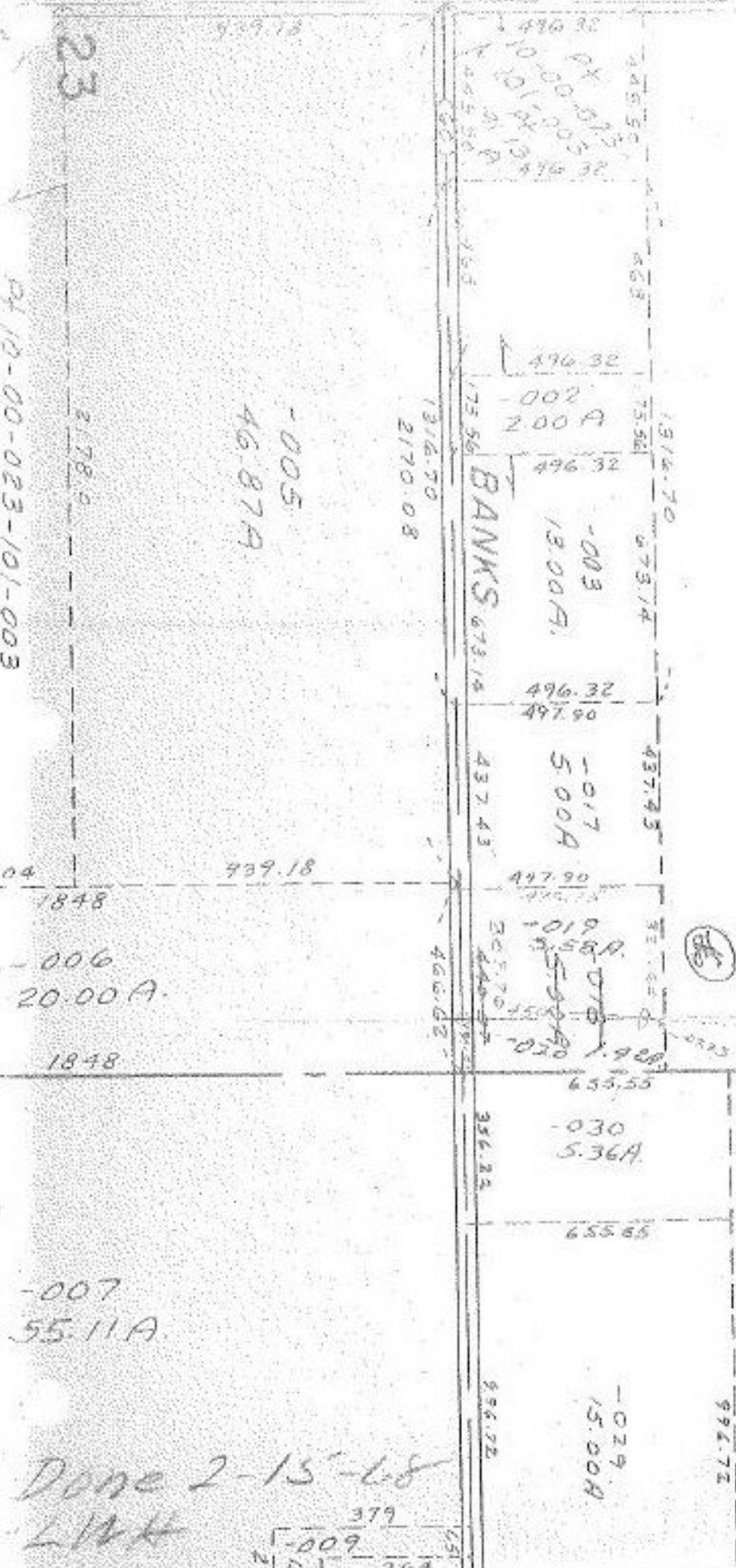


VP

SECS. S.E. 1/4 13, S. 1/2 14, 17, E. 1/2 18, E. 1/2 23, 24

23

PL 10-00-023-101-003



102

-001
80.00 A.

PG 10-6

APPROVED
LORAIN CO.
MAP DEPT
DATE 2-3-68
BY [Signature]

10-6

Done 2-15-68
LWH