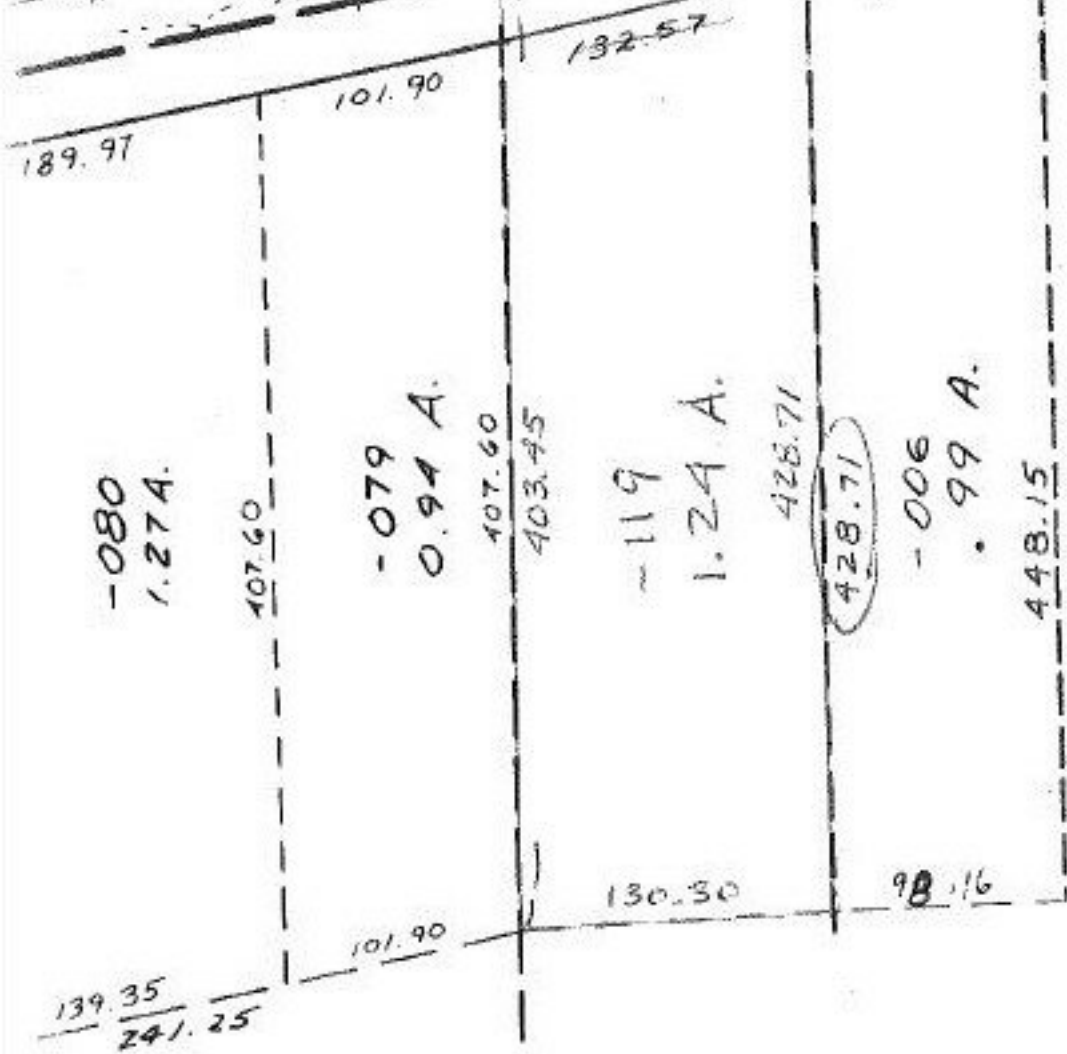
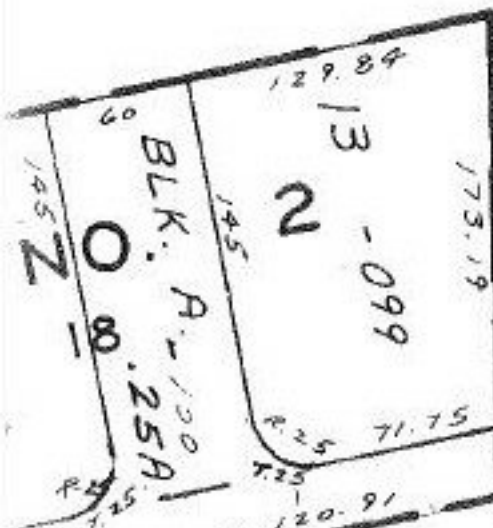


482.62

-103
4.36 A.

322.93



PER SURVEY K.S.A.

#15216

APPROVED
LORAIN CO.
MAP DEPT.
DATE 8-22-83
PAGE 4-00-023-G
BY T. McVain
VOID AFTER

T.M.
8-29-83

~~-010~~
~~23.90 A~~

-120
22.66 A

