

-001
54.59...

-007
29.50A.

A

-003
2.57 A.

16.28 24 98 34 82 273.69 267.22 143 251.65 11.37

-004
63.43 #15199

APPROVED
LORAIN CO.
MAP DEPT.
DATE 7-28-83
PAGE 13-D
BY <i>J. J. [unclear]</i>
VOID AFTER 15199

#15199

LAGRANGE - RICHFIELD

T.H. 7/27/84

-005
28.50A.

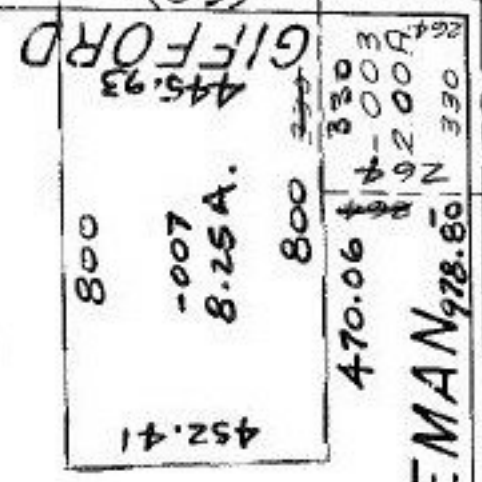
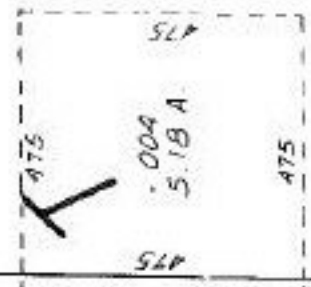
1309.11
-008 9.01A. 300
1309.04

-009
-006
56.29A.
47.28A.

-001
64.21A.

27

-005
61.32 A



WAKEMAN 978.80 N 330

303

(60)