

SEE 9-00-083-B

Date 7/1/68

W. L. ...

T-30-26

APPROVED

LORAIN CO. MAP DEPT.

DATE 1-26-68

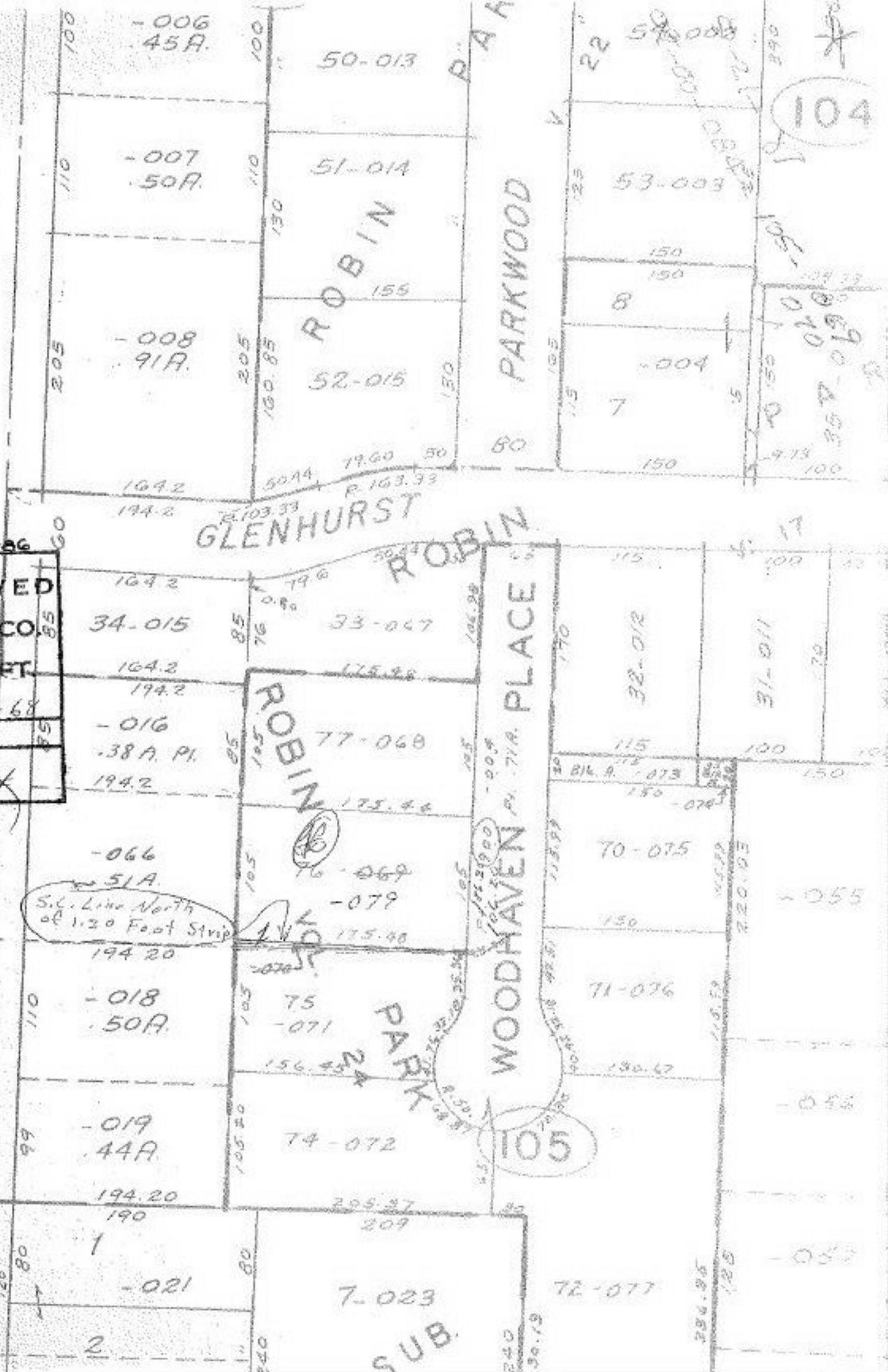
1517

BY *[Signature]*

Pg. 9-00-084-A

859
778

W. L. AMHERST



104

105

ROBIN

PARK

WOODHAVEN PL. 71A. PLACE

ROBIN

PARKWOOD

GLENHURST

SUB.