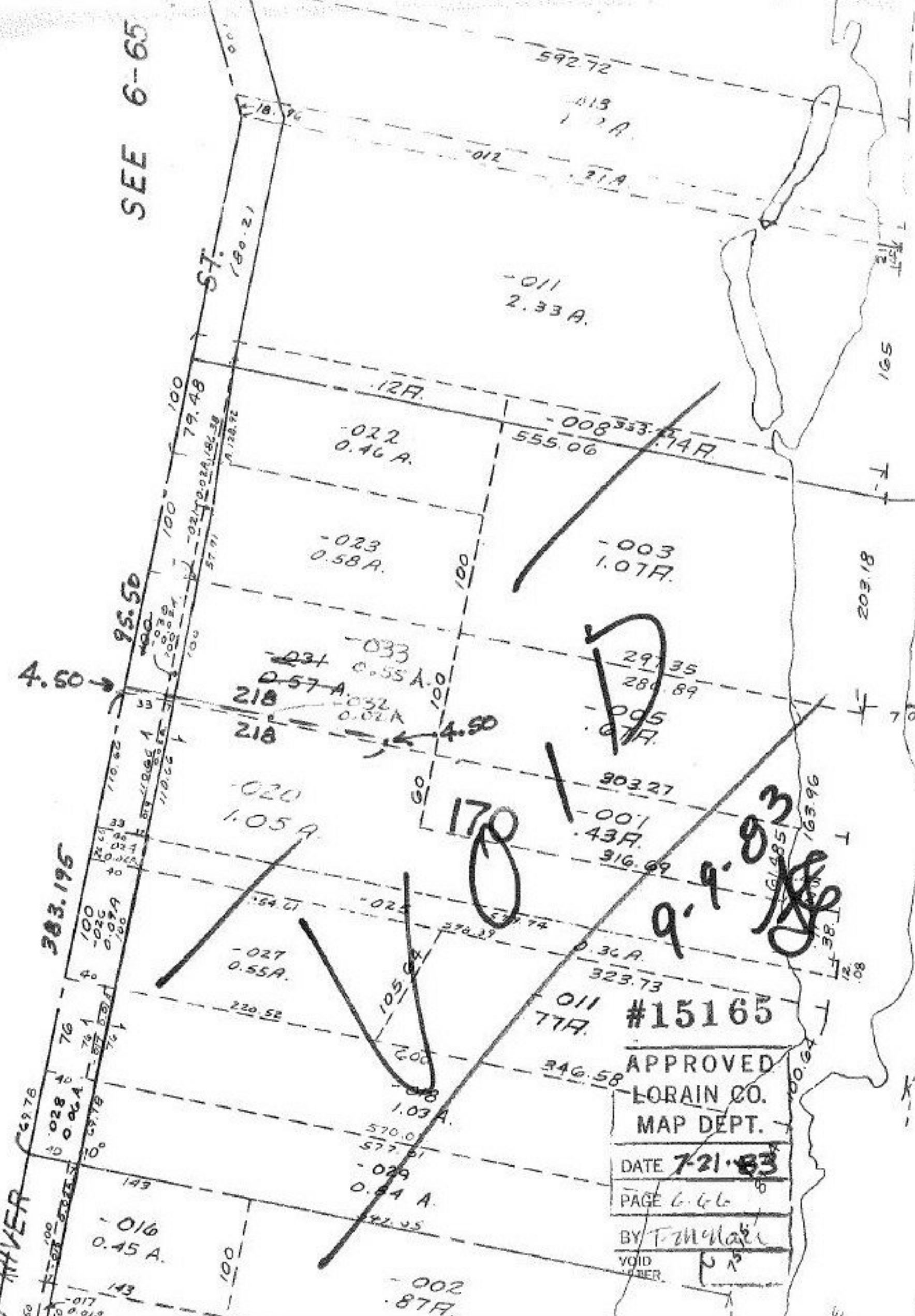


SEE 6-65



#15165  
 APPROVED  
 LORAIN CO.  
 MAP DEPT.  
 DATE 7-21-83  
 PAGE 6.66  
 BY T. M. [Signature]  
 VOID  
 OTHER

9'-9" 83  
 163.96  
 12.08

170

105.04

383.195

4.50

95.50

ST. 57

ST. RIVER