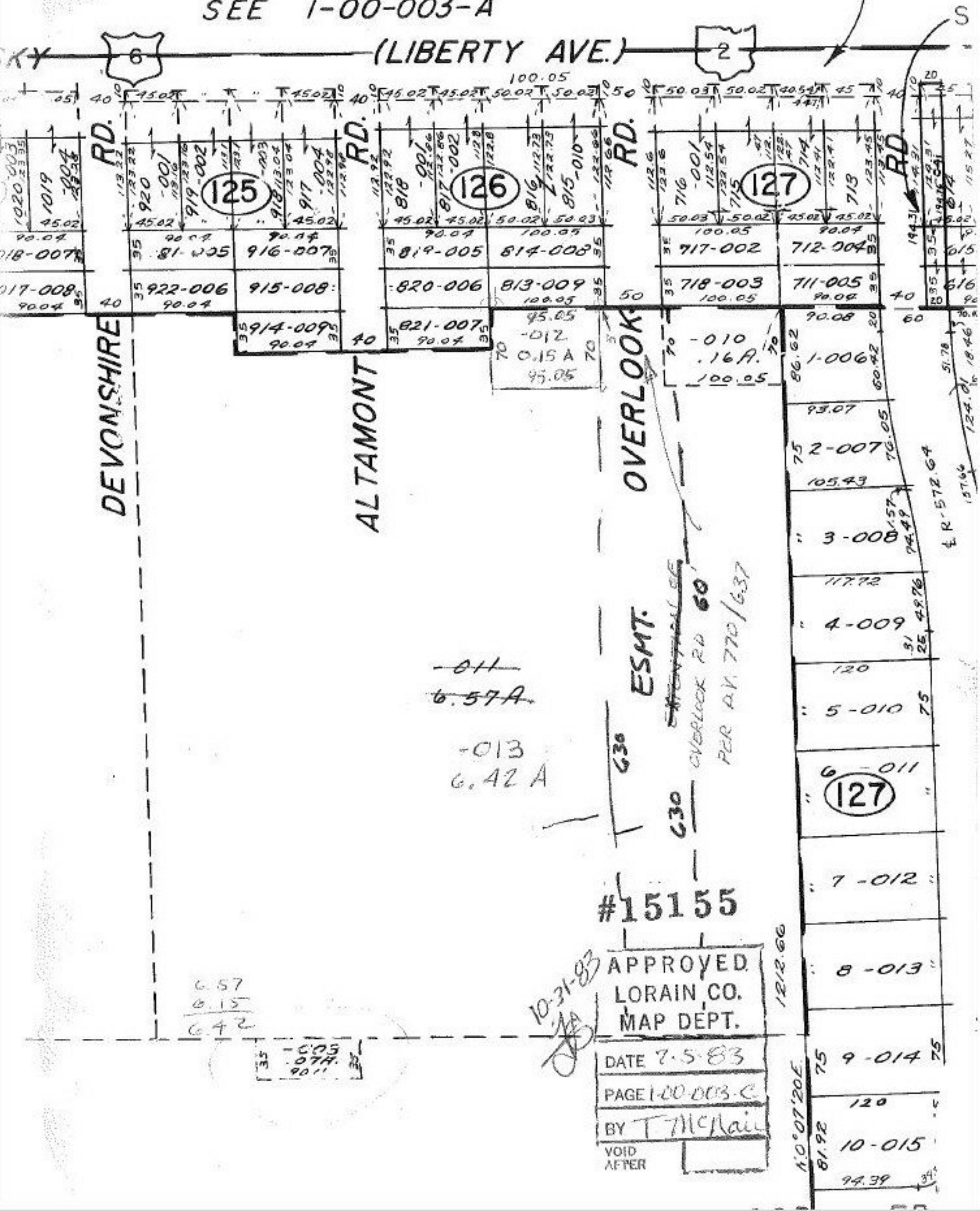


SEE 1-00-003-A

(LIBERTY AVE.)



DEVONSHIRE RD.

ALTAMONT RD.

OVERLOOK RD.

ESMT.

OVERLOOK RD 60' PER P.V. 770/637

~~011~~
6.57A

013
6.42A

6.57
6.15
6.42

35 -005
07A
90"

#15155

APPROVED
LORAIN CO.
MAP DEPT.

DATE 7.5.83

PAGE 1-00-003-C

BY T. McRain

VOID
AFTER

10-31-83
[Signature]

- 125
- 126
- 127
- 127
- 1-006
- 2-007
- 3-008
- 4-009
- 5-010
- 6-011
- 7-012
- 8-013
- 9-014
- 10-015

1212.66

10°07'20E

E.R. 572.64

157.66

124.01

51.78

25.4976

31

75

120

75

75

75

75

75

75

75

75

75

75