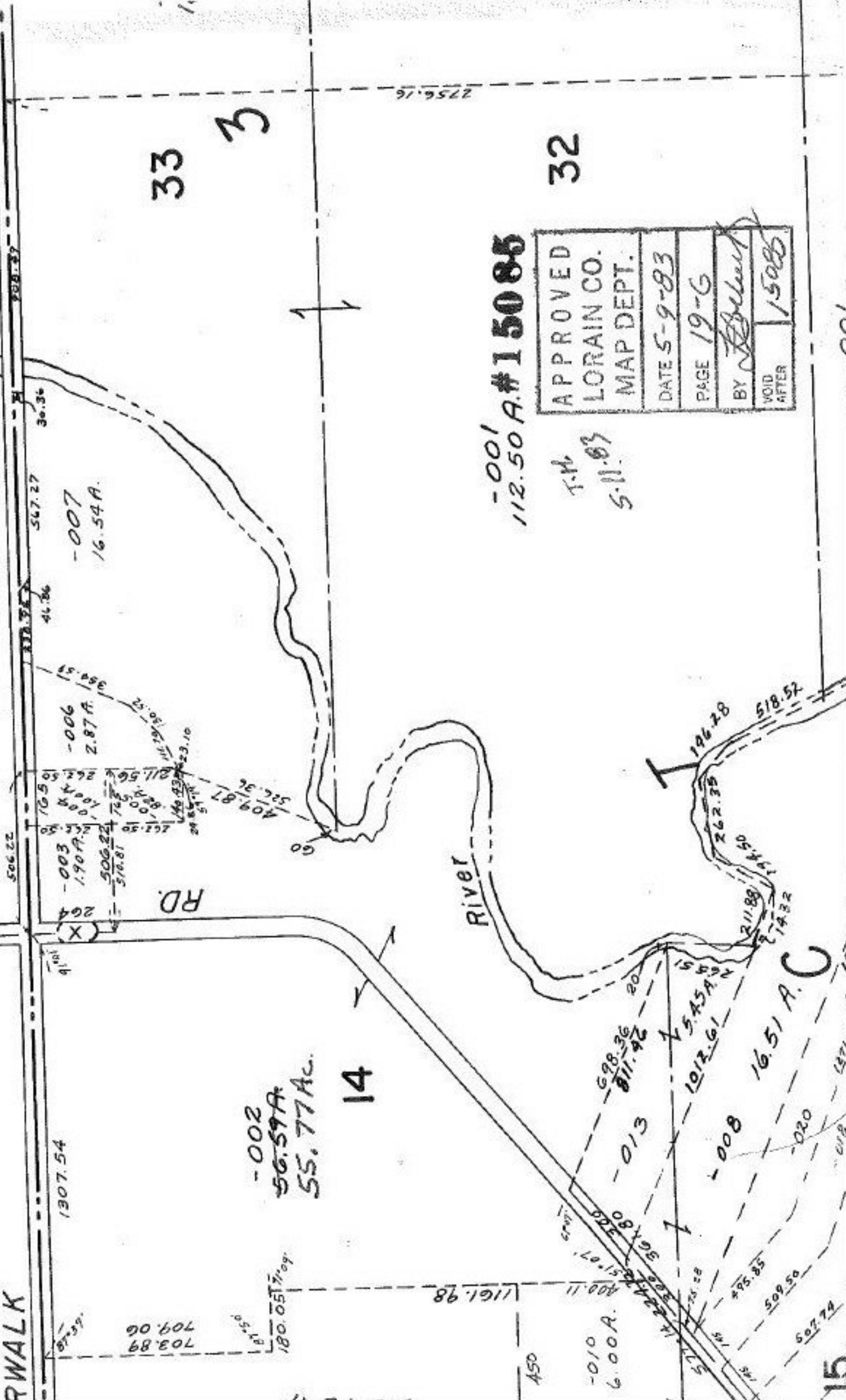


FOR DEEDS TO LORAIN COUNTY
 SEE D.V. 48 PG. 250 & 251
 D.V. 49 PG. 634



-001
 112.50 A. #15085

APPROVED
LORAIN CO.
MAP DEPT.
DATE 5-9-83
PAGE 19-6
BY <i>J. Bell</i>
VOID AFTER 15085

T.M.
 5-11-83

RWALK

RD.

River

1307.54

-002
 56.59 A.
 55.77 A.C.

14

-010
 6.00 A.

-013

-008

-020

15

450

001