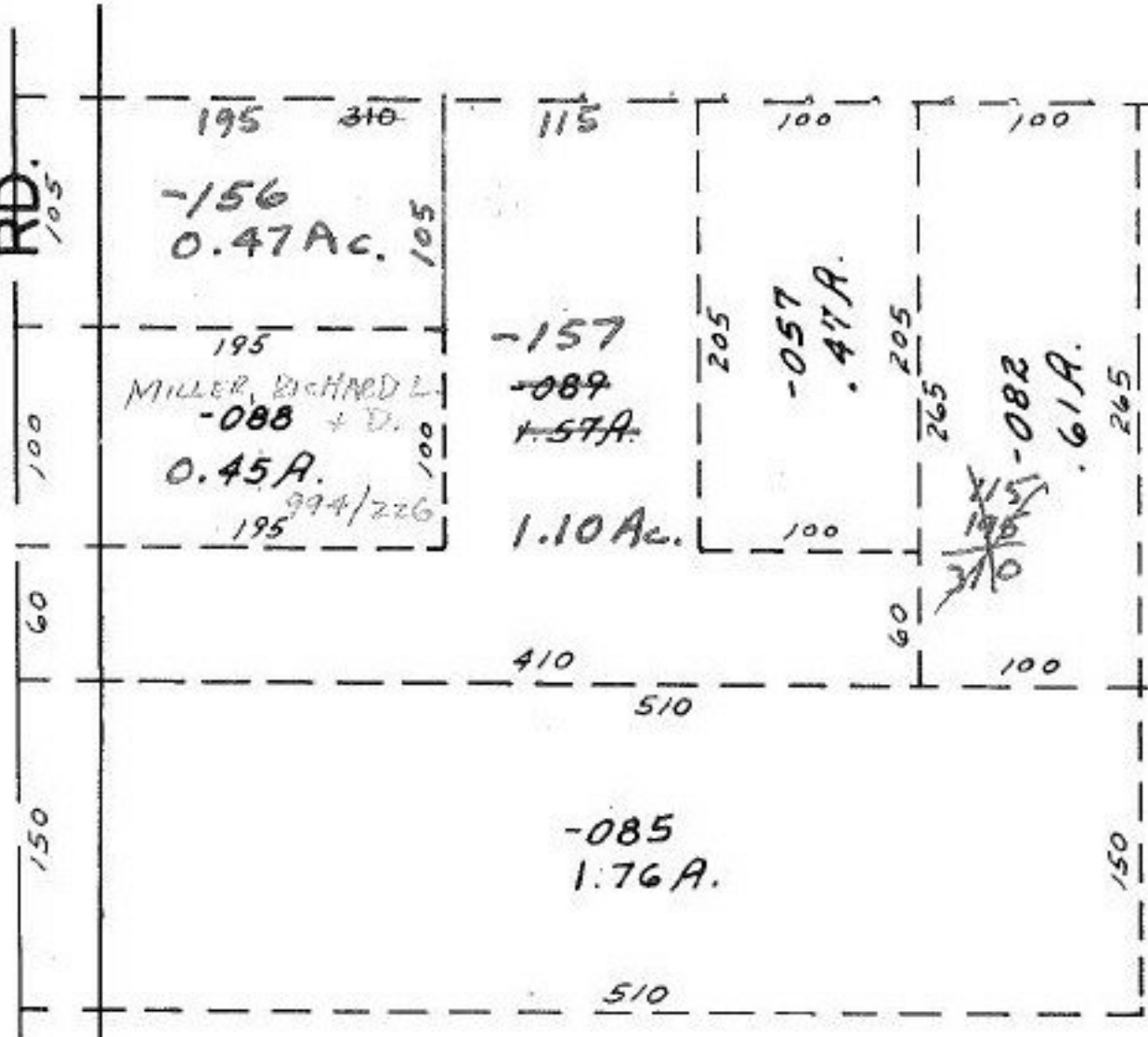


R.D.  
105



-156  
0.47 Ac.

195  
MILLER, RICHARD L.  
-088 + D.  
0.45 A.  
994/226  
195

-157  
-089  
1.57 A.

1.10 Ac.

-057  
0.47 A.

~~195~~  
~~310~~  
-082  
0.61 A.

-085  
1.76 A.

-098  
0.86 A.

#15076

APPROVED LORAIN CO. MAP DEPT.	
DATE 5-3-83	
PAGE 400-0136	
BY <i>F. Collier</i>	
VOID AFTER	15076

-100  
7.60 A.