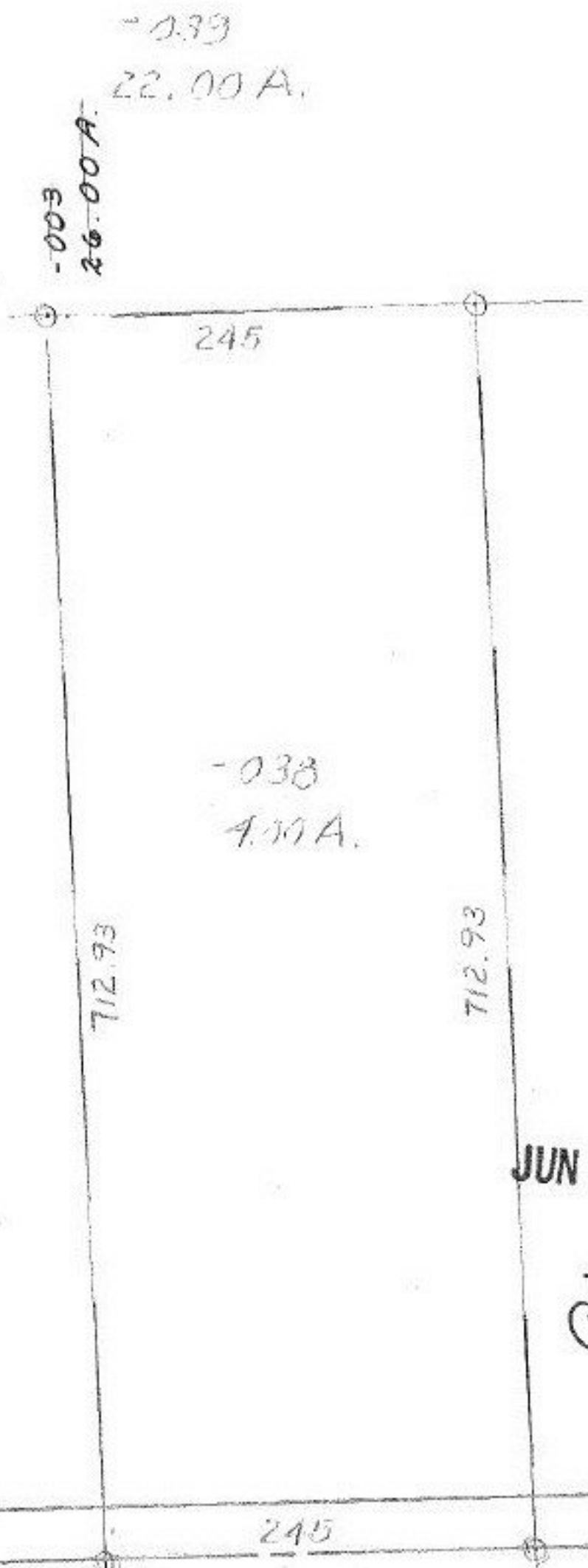


SEE

Surveyed by: Mc Glinchey & Assoc.
C=1° 29' 999,999.



1353.30

11

#15064

JUN 10 1983

APPROVED
LORAIN CO.
MAP DEPT.
DATE 4-19-83
BOOK 11-00-057-A
BY C. Francis
VOID AFTER

245

245

RD.

SEE 11-00-058-A