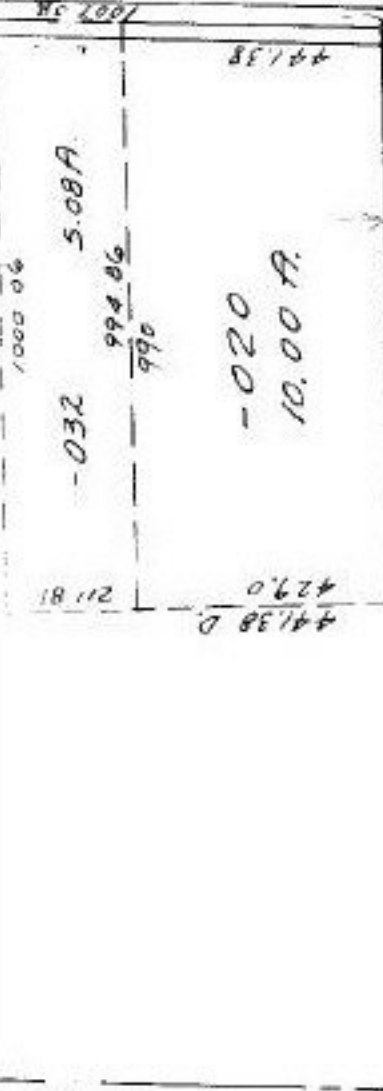


60.00 A.

1



-004
72.50 A.
-002
80.00 A.

2

SEE MAP -
A. KLEPP

6

#15055

APPROVED	
LORAIN CO.	
MAP DEPT.	
DATE 4-12-83	
PAGE 17-F	
BY C. Francis	
VOID AFTER	

5-26-83
[Signature]

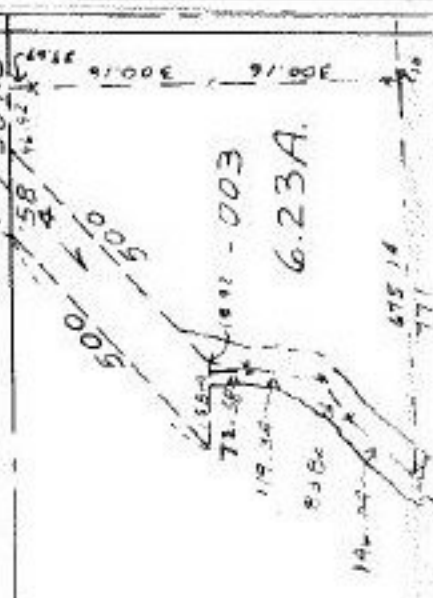
-001
99.67 A.

3



-007
70.29 A.

6



378.18 368.28

for

for