

190  
 783.35  
 -047  
 3.41A.  
 780.86

189.97  
 3584.89  
 -001  
 37.67Ac.

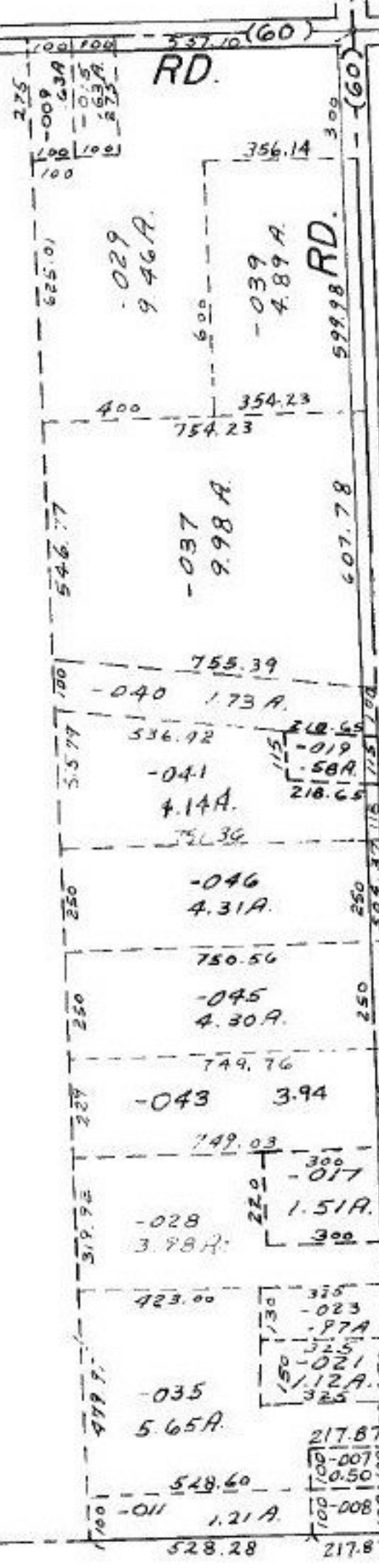
2801.54  
 3584.89  
 783.35  
 2801.54

150  
 -003  
 1.38A.  
 150

41.08  
 3.41  
 37.67

502.90  
 190  
 312.90

-036  
 78.10A  
**85**



82

#15051

APPROVED  
 LORAIN CO.  
 MAP DEPT.  
 DATE 4-8-83  
 PAGE 11-E North  
 BY *F. J. ...*  
 VOID AFTER 15051

JUN 10 1983

*[Handwritten signature]*

298.96