

1686.94

-026
24.27A.

587.05

785.39

-024
30.42A.

785.36

957.05

-018
6.04A.

275

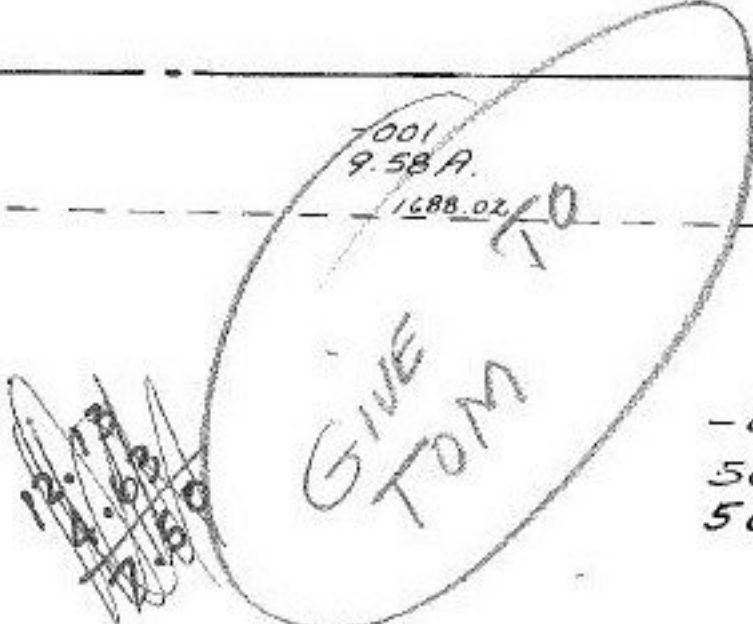
956.30

-002
6.00A.

257.98

7001
9.58A.

1688.02



-003
50.57A. DUP.
50.75A. Map

895

#15050

2128

496

APPROVED	
LORAIN CO.	
MAP DEPT.	
DATE	4-8-83
PAGE	15-E
BY	Hollitt
VOID AFTER	15050

63

T.M.
5-25-83

-012
89.41A.

744.50

60

933.44

733.44

60

360

-014
7.50A.
12.73A.

350

360

615.51

1643.10

311.15
-012
1.00A.
311.15

300
-026
1.38A.
300

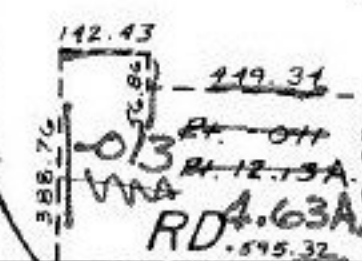
445.36

14.00A.

484	484
-025	-024
2.55A.	2.48A.
484	484
216.5	223.5

1171.65
65

RR Spike



-011
12.63A.

1629.87
1645.63
R.R.

-003
5.00A.

552.27

1309.27

997.85

RR Spike
228.58
Mon.
91.33 Dot

Mon. Box