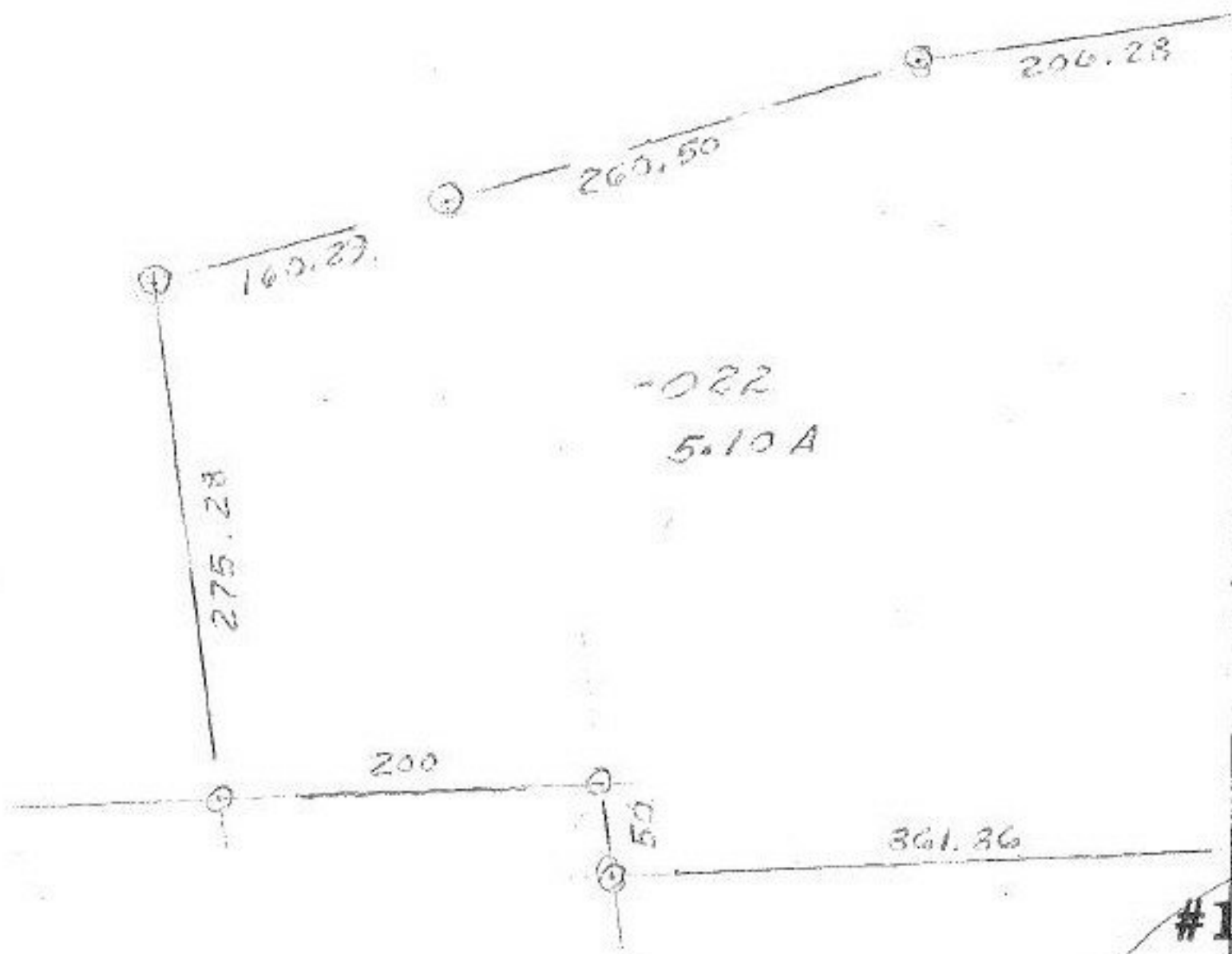


Pt. -021 Pt. -023
 Pt. 81.39 A Pt. 76.29 A

641 + 02.62
 638 + 73.18

 2 + 29.99



447.50

-022
 5.10 A

SEE 14-C

#15046

Surveyed by: Laundon, Simon, Cahl & Assoc. 4/82
 C = 1:23,333.33

11/11

5-23-83
[Signature]

229.44

APPROVED LORAIN CO. MAP DEPT.	
DATE	4-7-83
PAGE	14-00-075-3
BY	Cahly, J
VOID AFTER	

249 346.50

-006
 1.20 F.

132