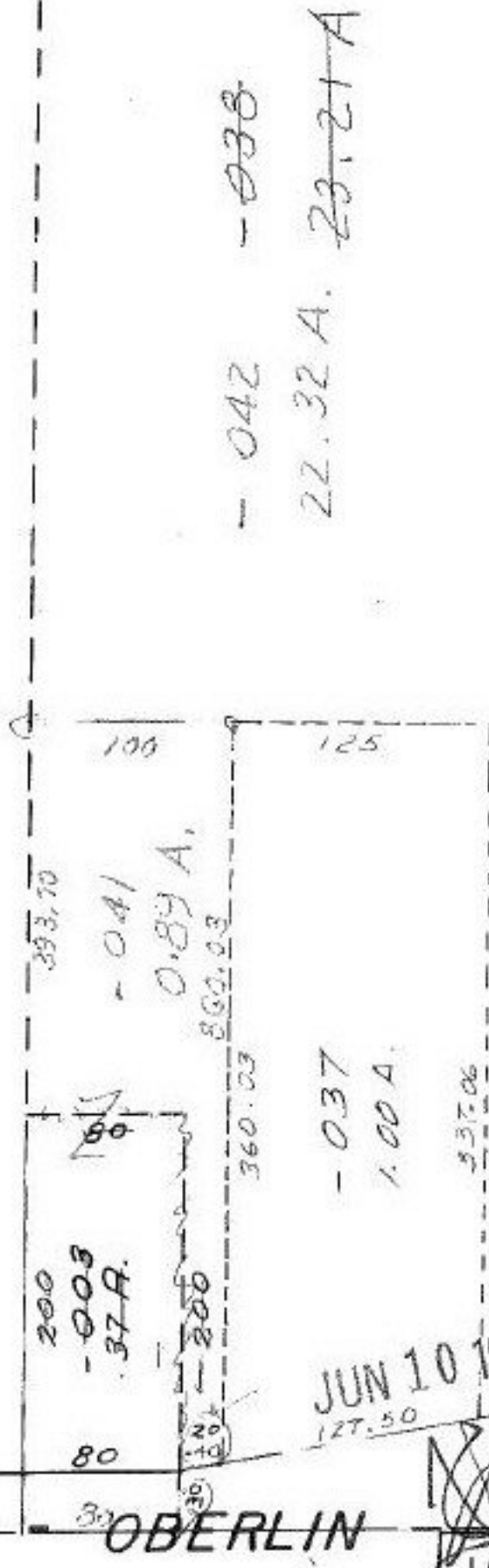


Surveyed By - Gray E. Penfound

C = 1% 200,000.00



22.32
.89
23.21

#15035

JUN 10 1983

APPROVED
LORAIN CO.
MAP DEPT.
DATE 3-29-83
PAGE 7-11-187-A
SEE 97-100-
VOID AFTER

RUSSIA TWP.

SCALE: 1" = 100'