

-004
54.50 A.

435
-003 1.50 A.
435

COMBINATION

74.25
-002
28 A

~~-003~~
~~88.92 A.~~

~~-005~~
~~89.20 A.~~

#15032

APPROVED
LORAIN CO.
MAP DEPT.

62

T.M.
5-11-83

DATE 3-28-83

PAGE 19-H

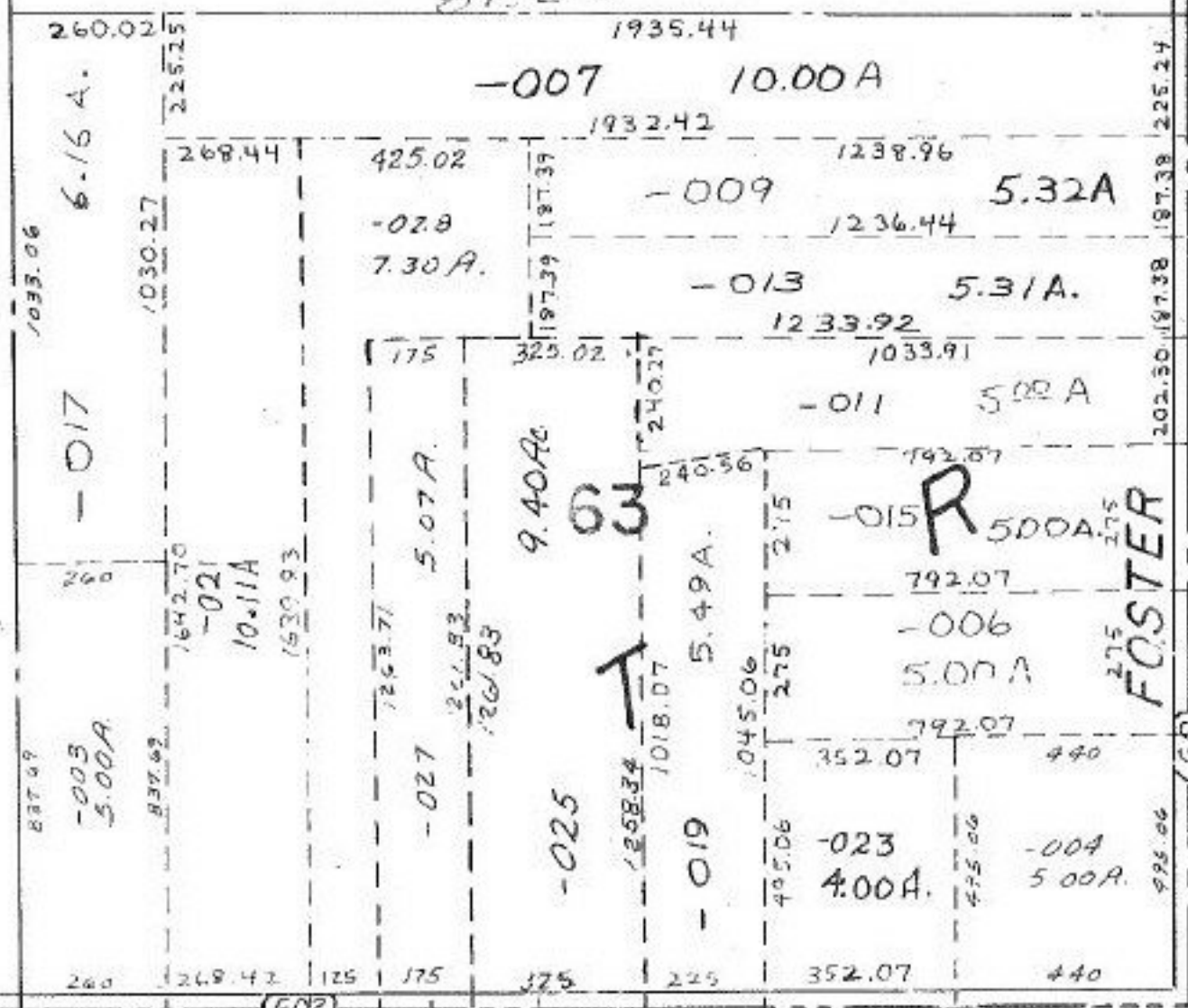
BY T. McNeil

VOID
AFTER

172.90
183.91
204.10
-004
2.79 A.
346.42
932.25

765.12

~~88.92~~
~~28~~
89.20



A

FOSTER

(60)