

CAPEL

250.82

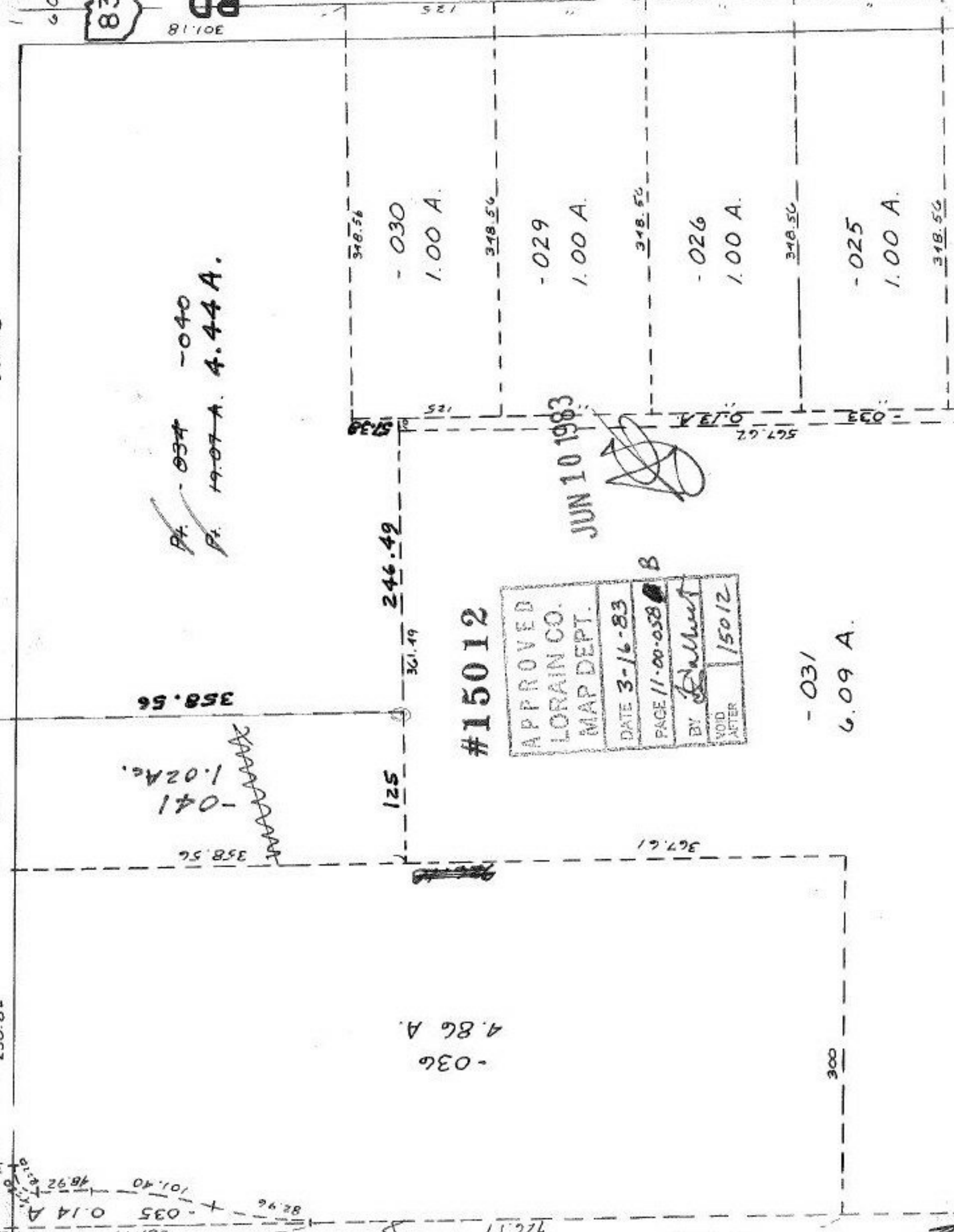
125

595.05

RD.



RD.  
301.18



Pt. - 034 - 040  
Pt. 19.07 A. 4.44 A.

358.56  
-041  
1.02 A.  
~~XXXXXX~~

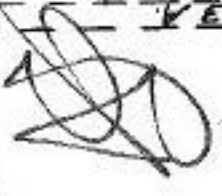
125  
361.49  
246.42

-036  
4.86 A.

#15012

APPROVED	
LORAIN CO.	
MAP DEPT.	
DATE 3-16-83	B
PAGE 11-00-058	
BY <i>Ballant</i>	
VOID AFTER 1/5012	

JUN 10 1983



348.56

- 030  
1.00 A.

348.56

- 029  
1.00 A.

348.56

- 026  
1.00 A.

348.56

- 025  
1.00 A.

348.56

- 031  
6.09 A.

281.44  
-035 0.14 A.  
48.92  
101.40

82.96

726.17

766.10

300

367.61

567.62

0.13 A.

0.33