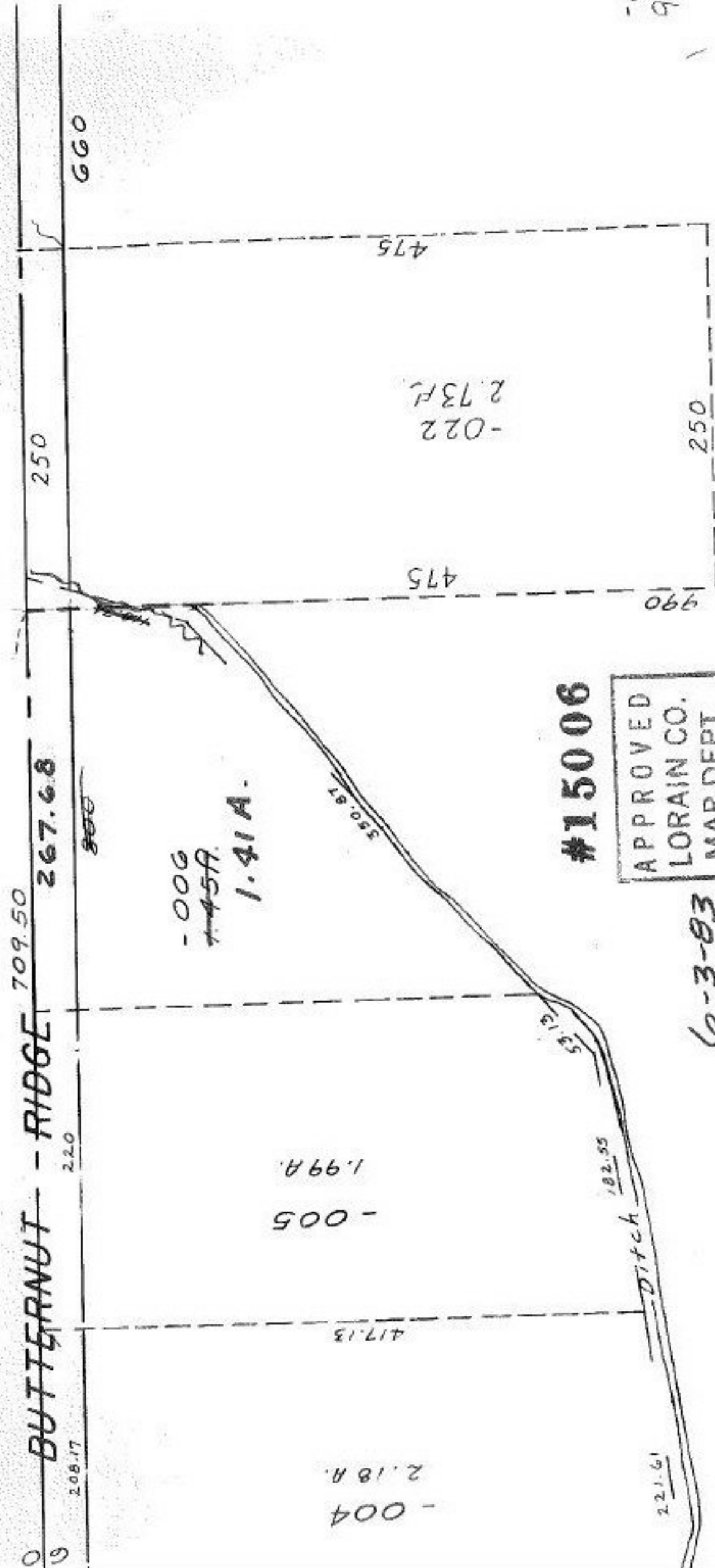


SEE 9-G



BUTTERNUT - RIDGE

267.68

250

2.20

2.08.17

900

660

-006
1.45A.

1.41 A.

-005
1.99 A.

-004
2.18 A.

-022
2.73 A.

350.87

417.13

475

475

250

990

#15006

APPROVED LORAIN CO. MAP DEPT.	
DATE	3-15-03
PAGE	9-00-067-B
BY	<i>J. E. Colburn</i>
VOID AFTER	15006

6-3-03

221.61

182.55

53.13

Ditch

990

475

9