

192.77
192.59
4.35

9-00-074-103-046 12-14-78 *12333

00-064-B

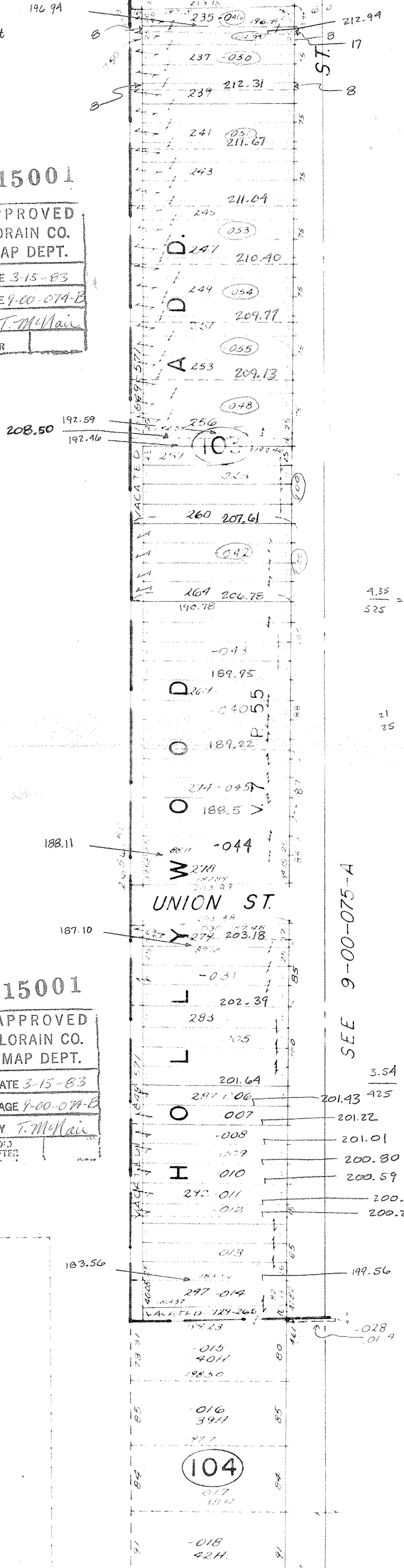
670.50
 $\frac{4.44}{525} = \frac{x}{2071 \text{ ft } 25' \text{ lot}}$

JUN 10 1983



#15001
APPROVED
LORAIN CO.
MAP DEPT.
DATE 3-15-83
PAGE 9-00-074-B
BY T. McHain
VOID
AFTER

MAPLE ST



006
2720A

$\frac{4.35}{525} =$

21
25

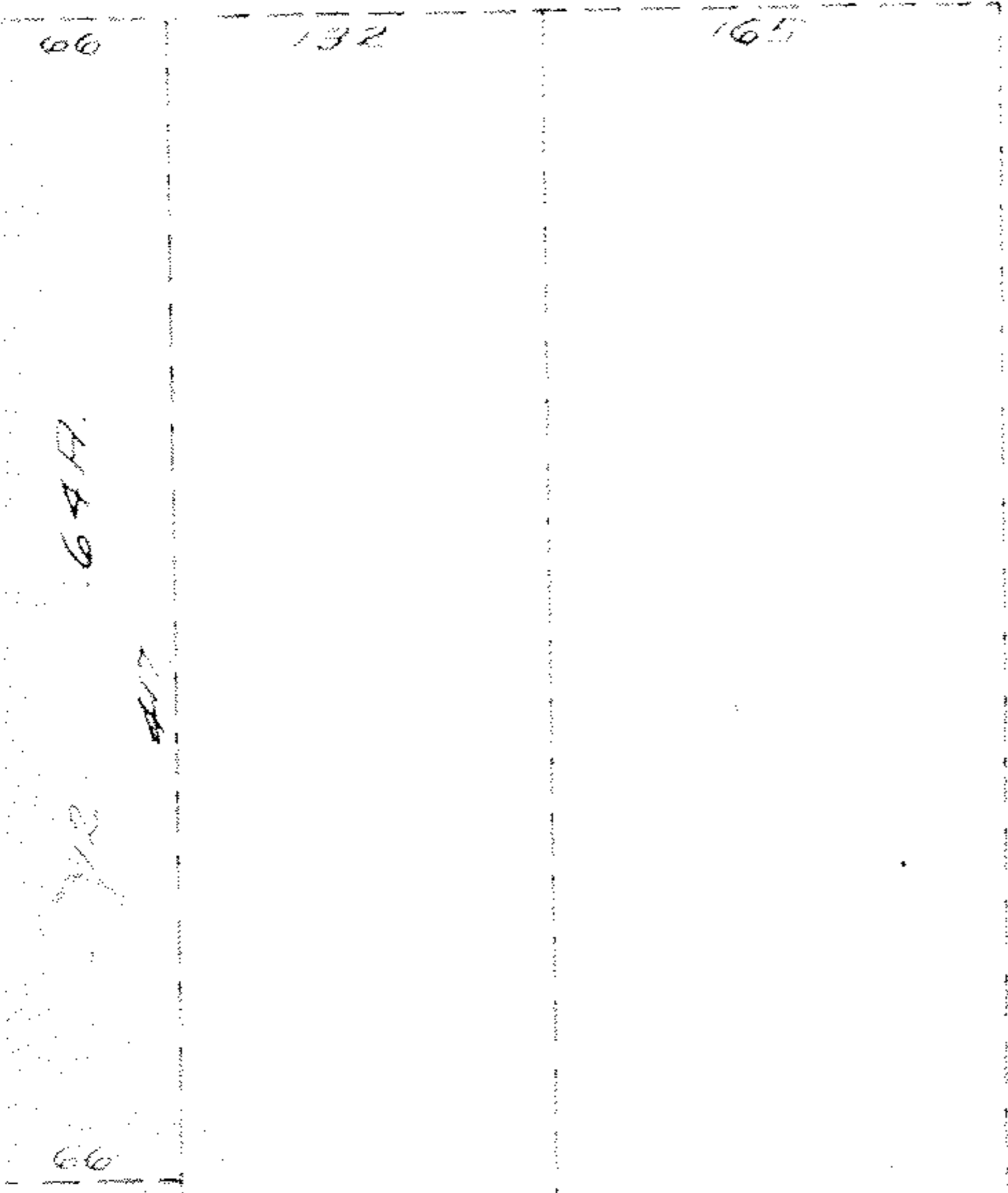
SEE 9-00-075-A

$\frac{3.54}{425} =$

#15001
APPROVED
LORAIN CO.
MAP DEPT.
DATE 3-15-83
PAGE 9-00-074-B
BY T. McHain
VOID
AFTER

UNION ST

02



104