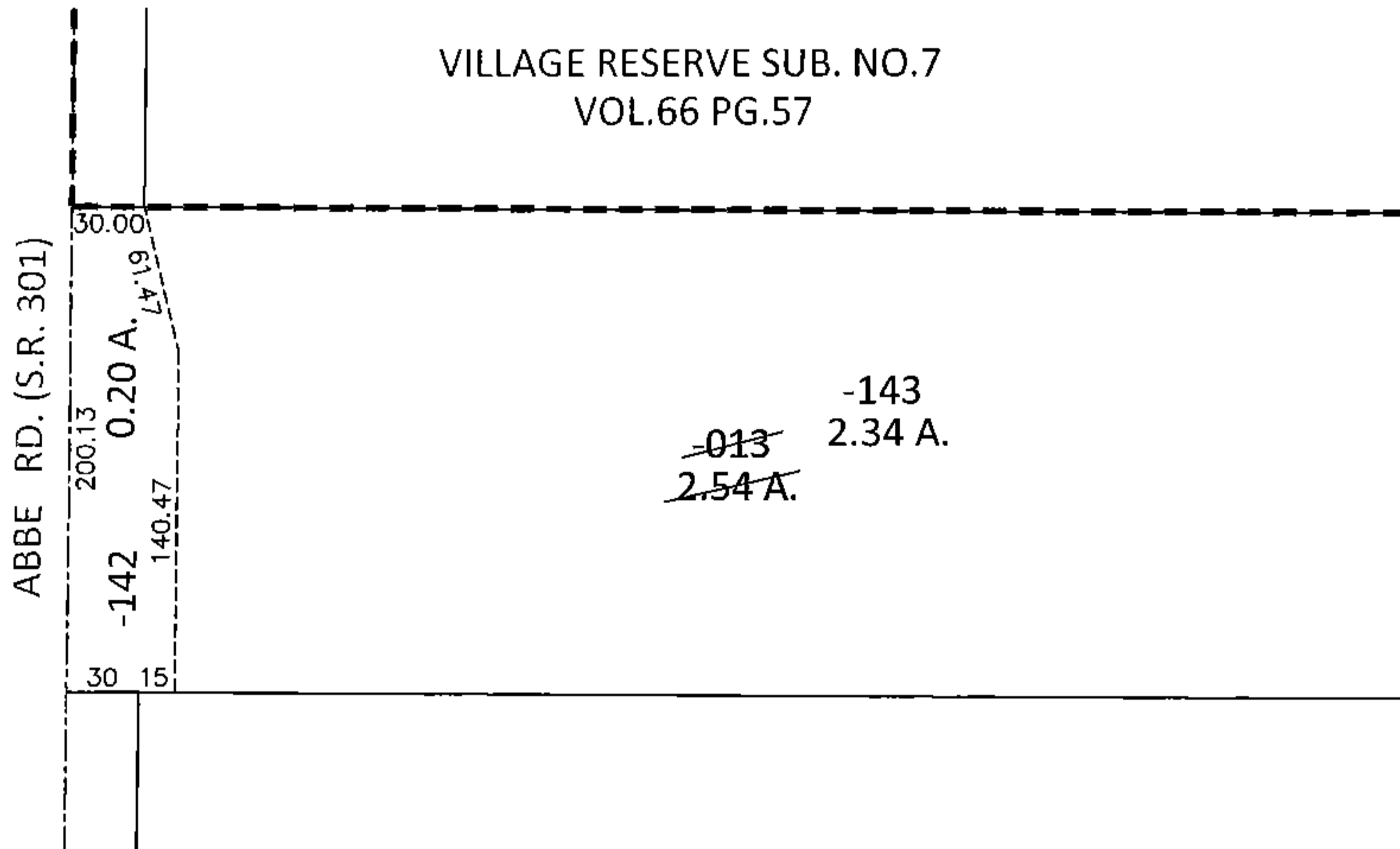
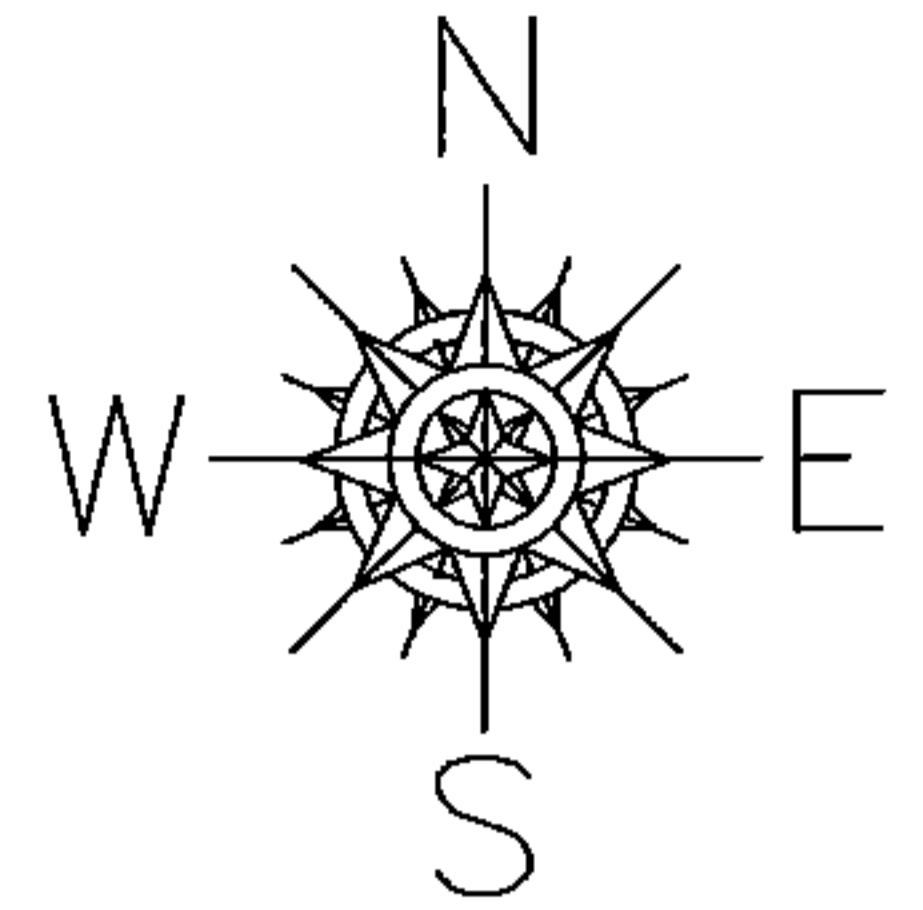


PARENT PARCEL: 03-00-002-101-013

CHILD PARCEL: 03-00-002-101-142, -143

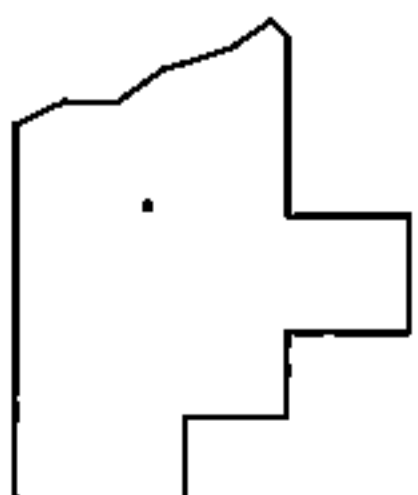
STARTING POINT: SOUTHWEST CORNER OF VILLAGE RESERVE SUB. NO.7 (VOL.66 PG.57)

15-00728



LOR-301-22.56

13-WD



SPLITS/DEEDS PROCESSED

LORAIN COUNTY TAX MAP DEPARTMENT
226 MIDDLE AVE. ELYRIA, OHIO

SURVEYED BY: ROBERT J. MCAULEY

CLOSURE: .01:10,000

MAP PAGE(S): 3-00-002-A

APPROVED BY: RRM DATE: 7-21-15

SCALE: 1"= 100 PRIOR INST.: 20140493170