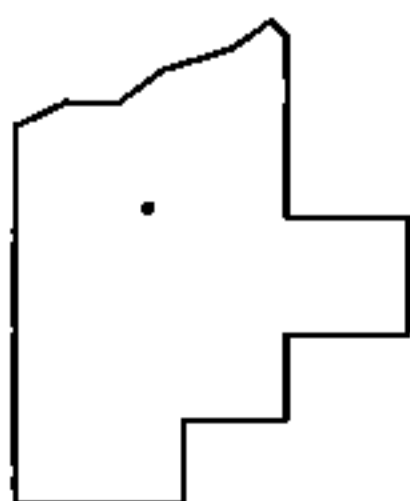
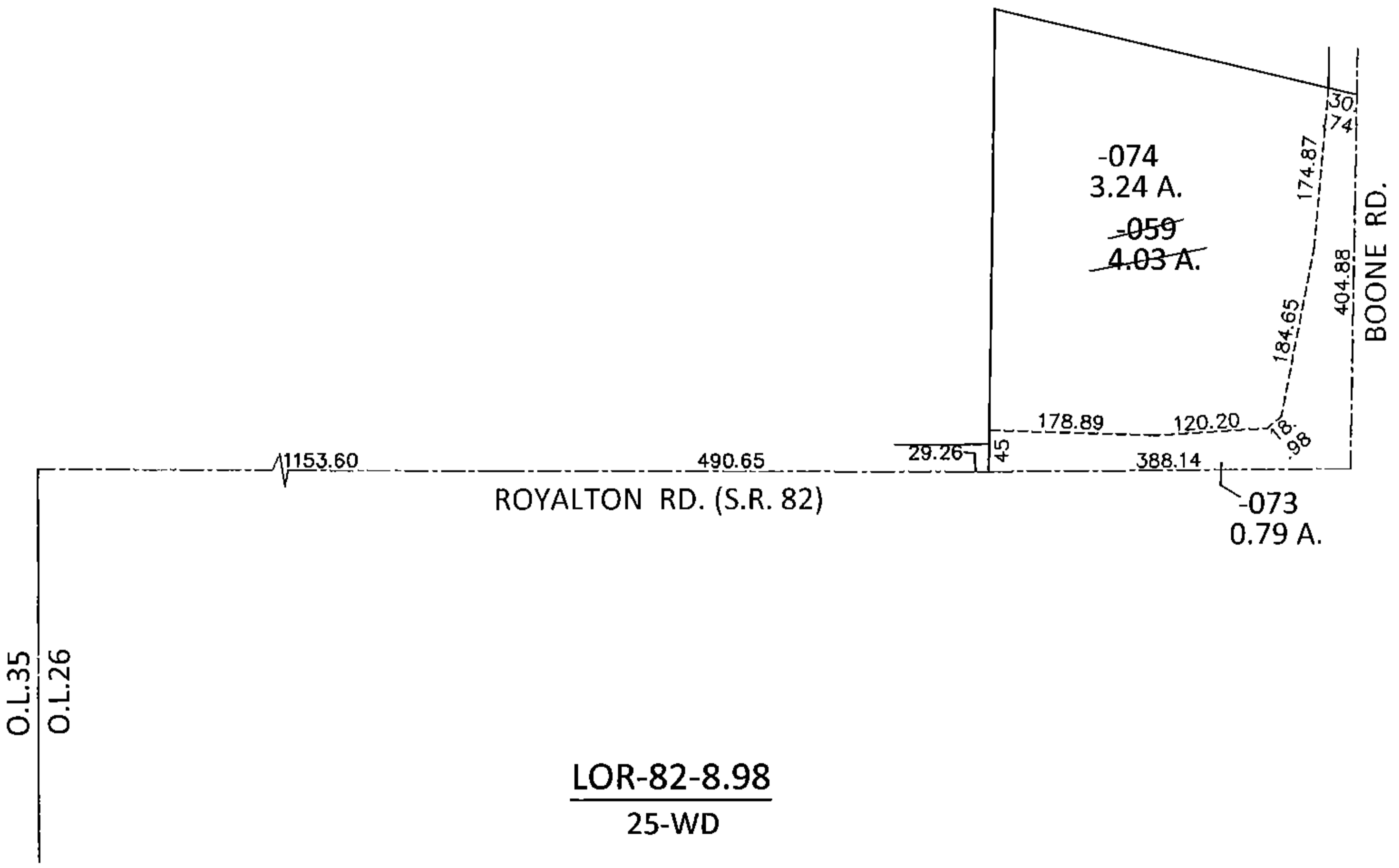
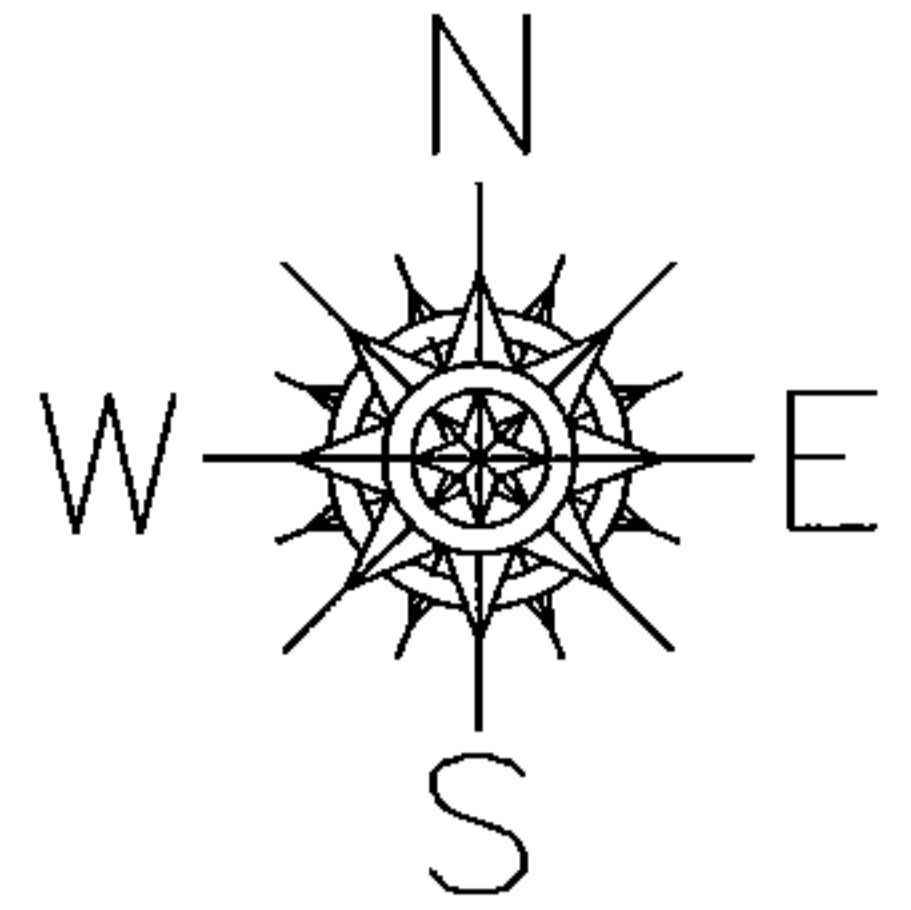


PARENT PARCEL: 12-00-025-000-059

CHILD PARCEL: 12-00-025-000-073, -074

STARTING POINT: INTERSECTION OF C/L OF S.R. 82 AND WEST LINE OF O.L.26

15-00724



SPLITS/DEEDS PROCESSED
 LORAIN COUNTY TAX MAP DEPARTMENT
 226 MIDDLE AVE. ELYRIA, OHIO

SURVEYED BY: AMY M. KELLY
 CLOSURE: .01:10,000
 MAP PAGE(S): 12-00-025-B
 APPROVED BY: RRM DATE: 4-1-15
 SCALE: 1"= 200 PRIOR INST.: OR 915/336