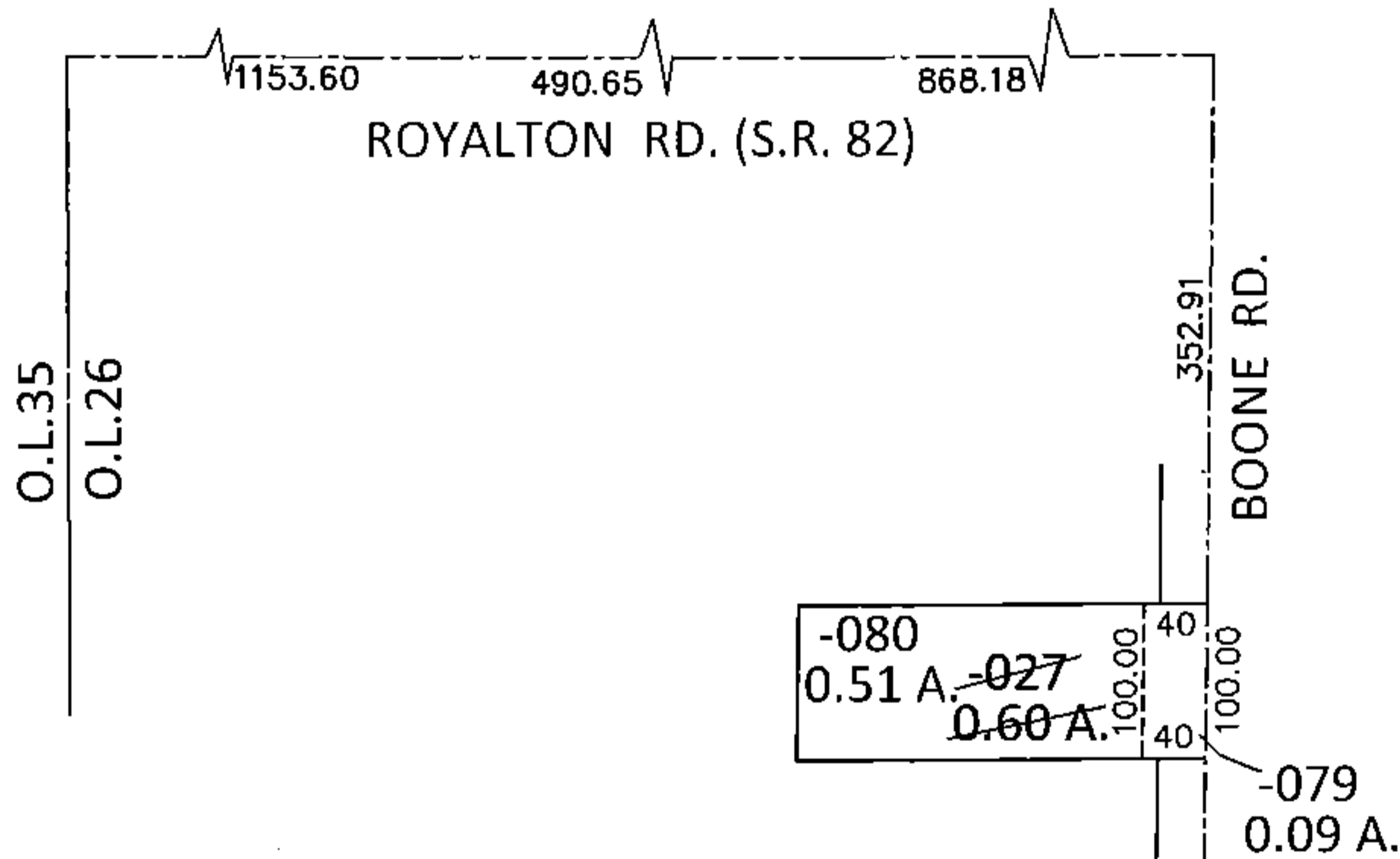
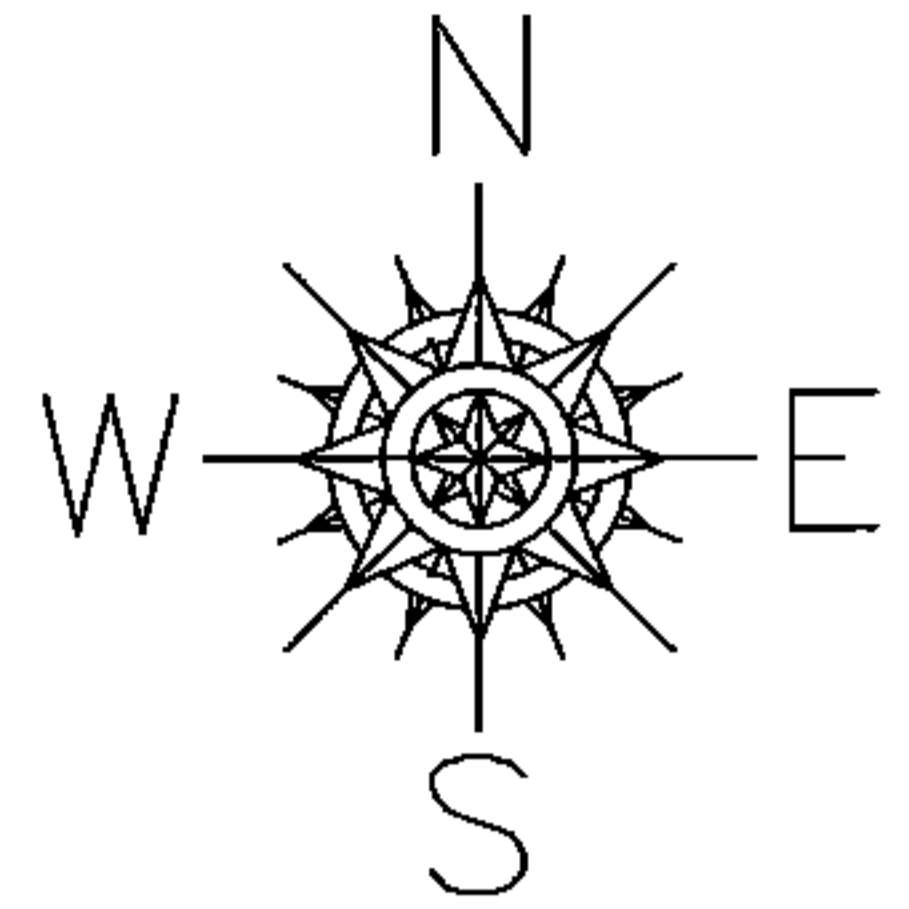


PARENT PARCEL: 12-00-026-000-027

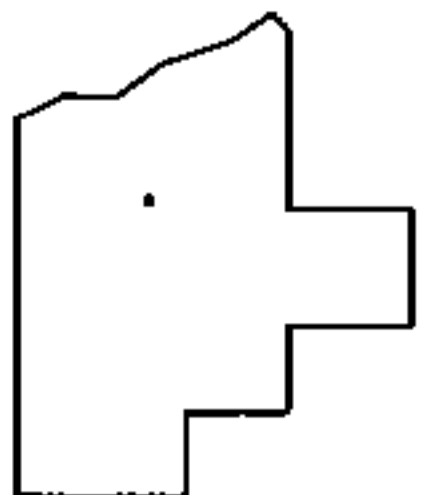
CHILD PARCEL: 12-00-026-000-079, -080

STARTING POINT: INTERSECTION OF C/L OF S.R. 82 AND WEST LINE OF O.L.26

15-00722



LOR-82-8.98  
75-WD



SPLITS/DEEDS PROCESSED

LORAIN COUNTY TAX MAP DEPARTMENT  
226 MIDDLE AVE. ELYRIA, OHIO

SURVEYED BY: AMY M. KELLY

CLOSURE: .01:10,000

MAP PAGE(S): 12-00-026-B

APPROVED BY: RRM DATE: 4-8-15

SCALE: 1"= 200 PRIOR INST.: OR 1077/218