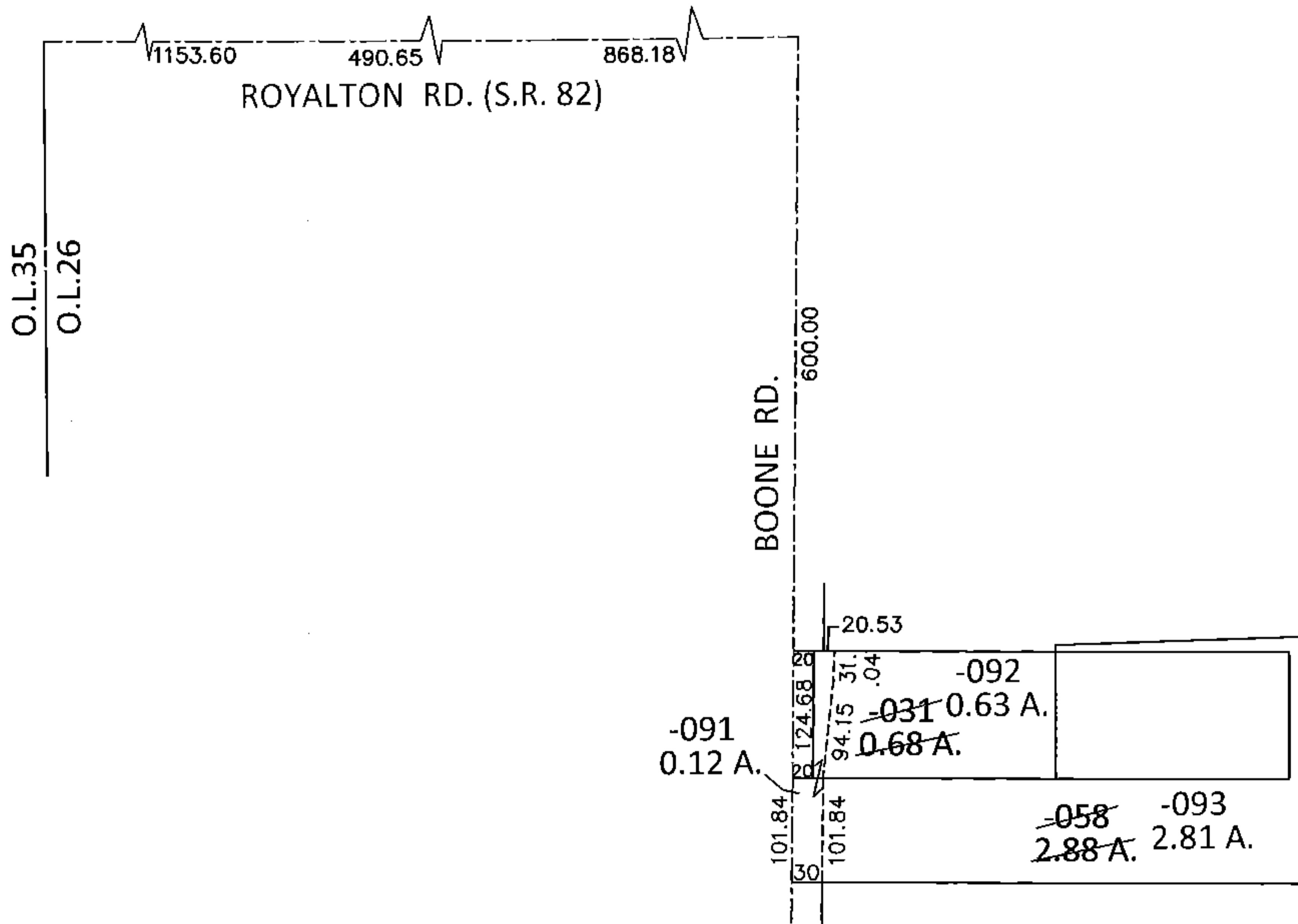
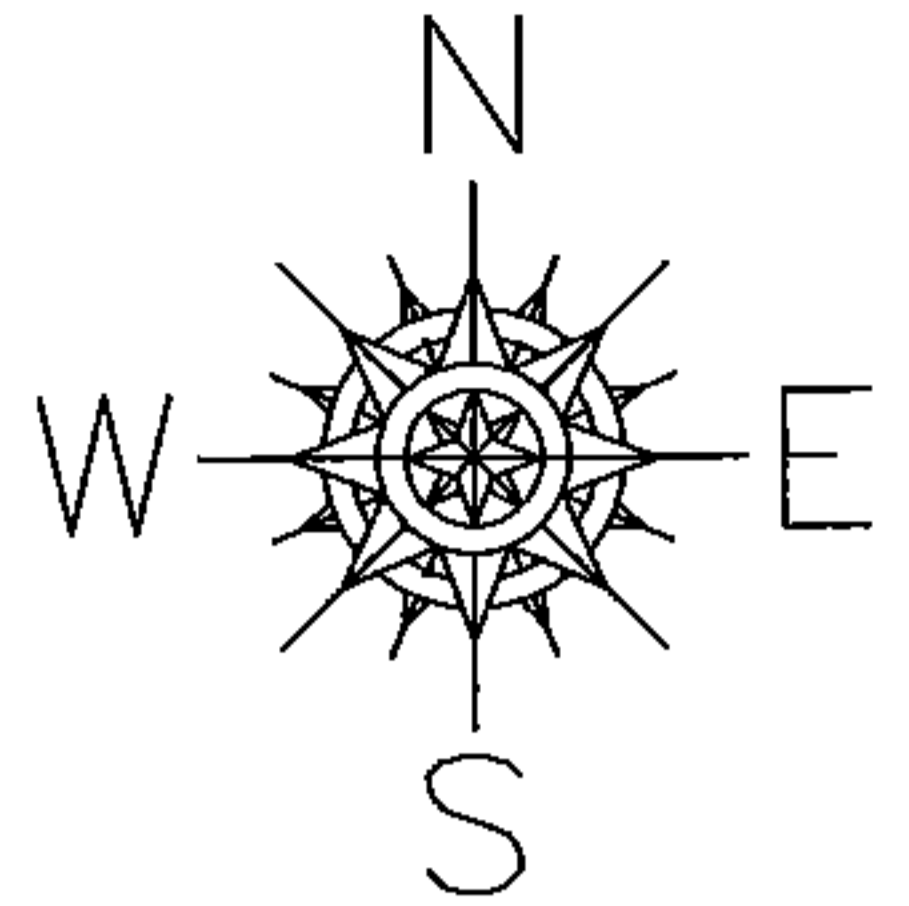
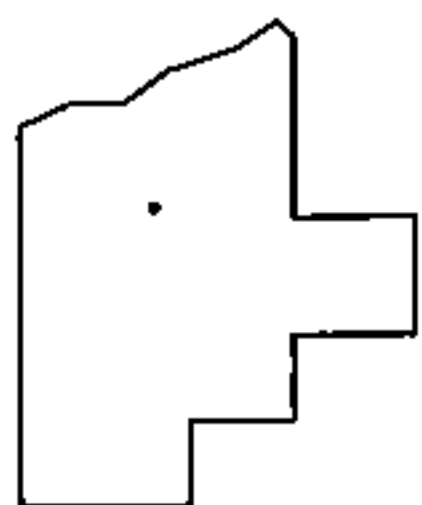


PARENT PARCEL: 12-00-015-000-031, -058
CHILD PARCEL: 12-00-015-000-091 THRU -093
STARTING POINT: INTERSECTION OF C/L OF S.R. 82 AND WEST LINE OF O.L.26

15-00719



LOR-82-8.98
72-WD



SPLITS/DEEDS PROCESSED
LORAIN COUNTY TAX MAP DEPARTMENT
226 MIDDLE AVE. ELYRIA, OHIO

SURVEYED BY: AMY M. KELLY
CLOSURE: .01:10,000
MAP PAGE(S): 12-00-015-A
APPROVED BY: RRM DATE: 4-7-15
SCALE: 1"= 200 PRIOR INST.: OR 359/439