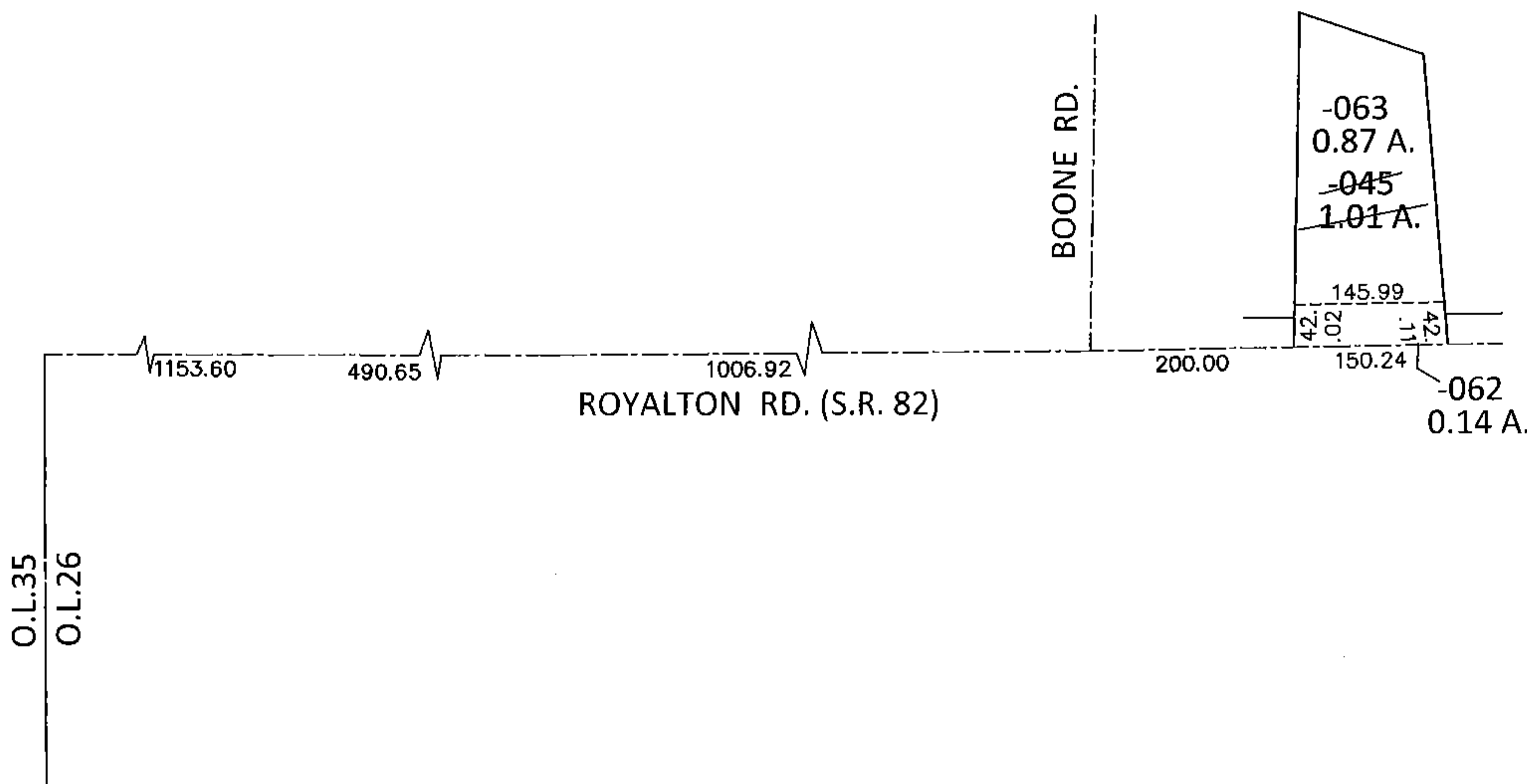
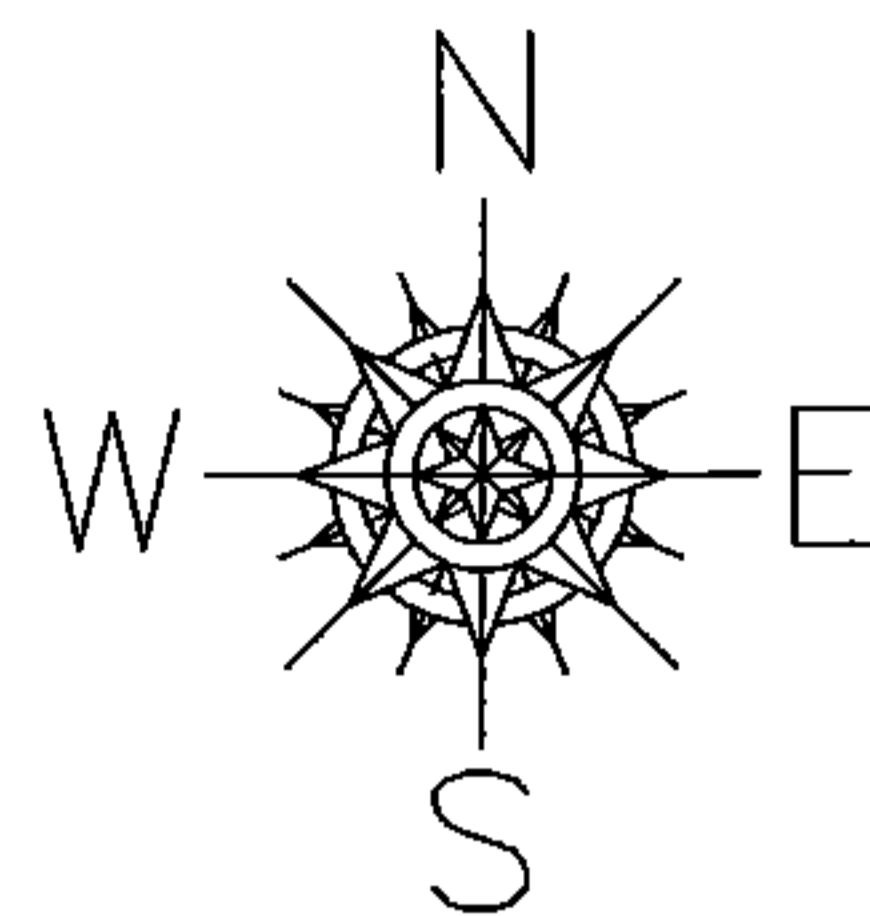


PARENT PARCEL: 12-00-016-000-045

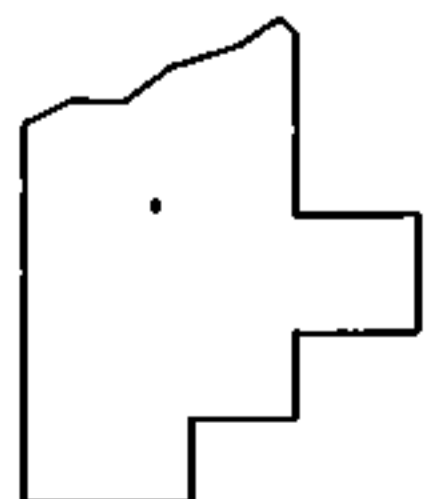
CHILD PARCEL: 12-00-016-000-062, -063

STARTING POINT: INTERSECTION OF C/L OF S.R. 82 AND WEST LINE OF O.L.26

15-00716



LOR-82-8.98  
29-WD1



SPLITS/DEEDS PROCESSED

LORAIN COUNTY TAX MAP DEPARTMENT  
226 MIDDLE AVE. ELYRIA, OHIO

SURVEYED BY: AMY M. KELLY

CLOSURE: .01:10,000

MAP PAGE(S): 12-00-016-A

APPROVED BY: RRM DATE: 4-1-15

SCALE: 1"= 200 PRIOR INST.: OR 1001/697