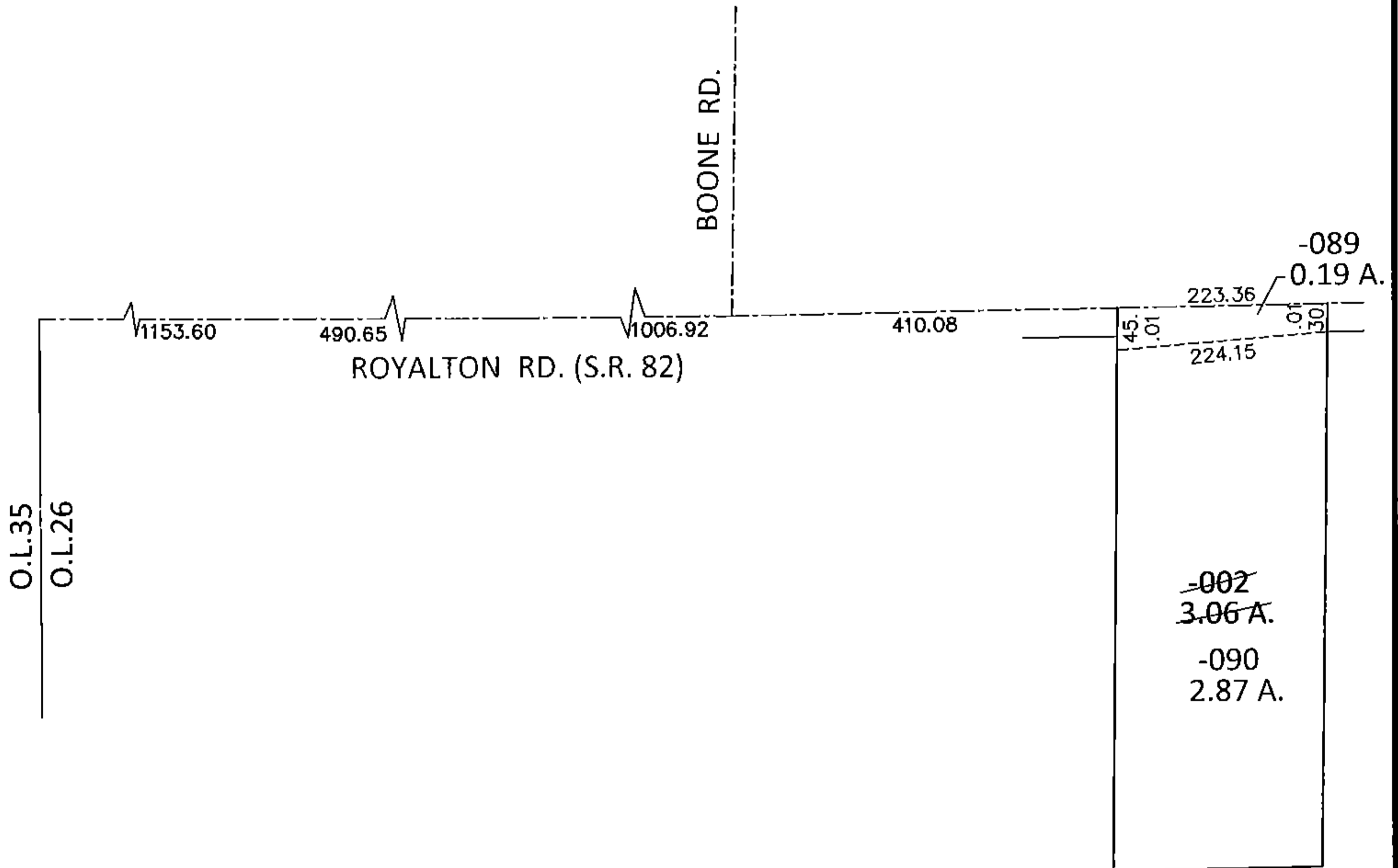
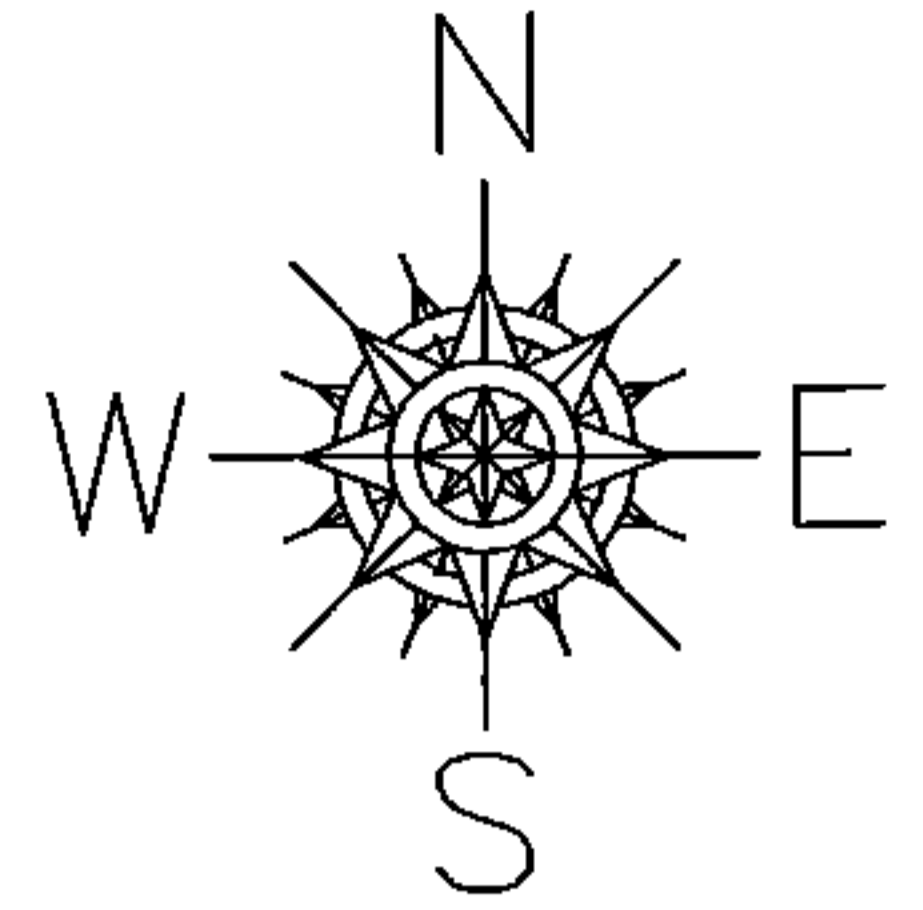


PARENT PARCEL: 12-00-015-000-002

CHILD PARCEL: 12-00-015-000-089, -090

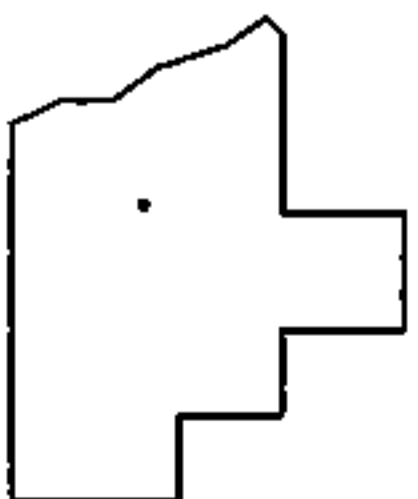
STARTING POINT: INTERSECTION OF C/L OF S.R. 82 AND WEST LINE OF O.L.26

15-00715



LOR-82-8.98

28-WD3



SPLITS/DEEDS PROCESSED

LORAIN COUNTY TAX MAP DEPARTMENT
226 MIDDLE AVE. ELYRIA, OHIO

SURVEYED BY: AMY M. KELLY

CLOSURE: .01:10,000

MAP PAGE(S): 12-00-015-A

APPROVED BY: RRM DATE: 4-2-15

SCALE: 1"= 200 PRIOR INST.: 20090296562