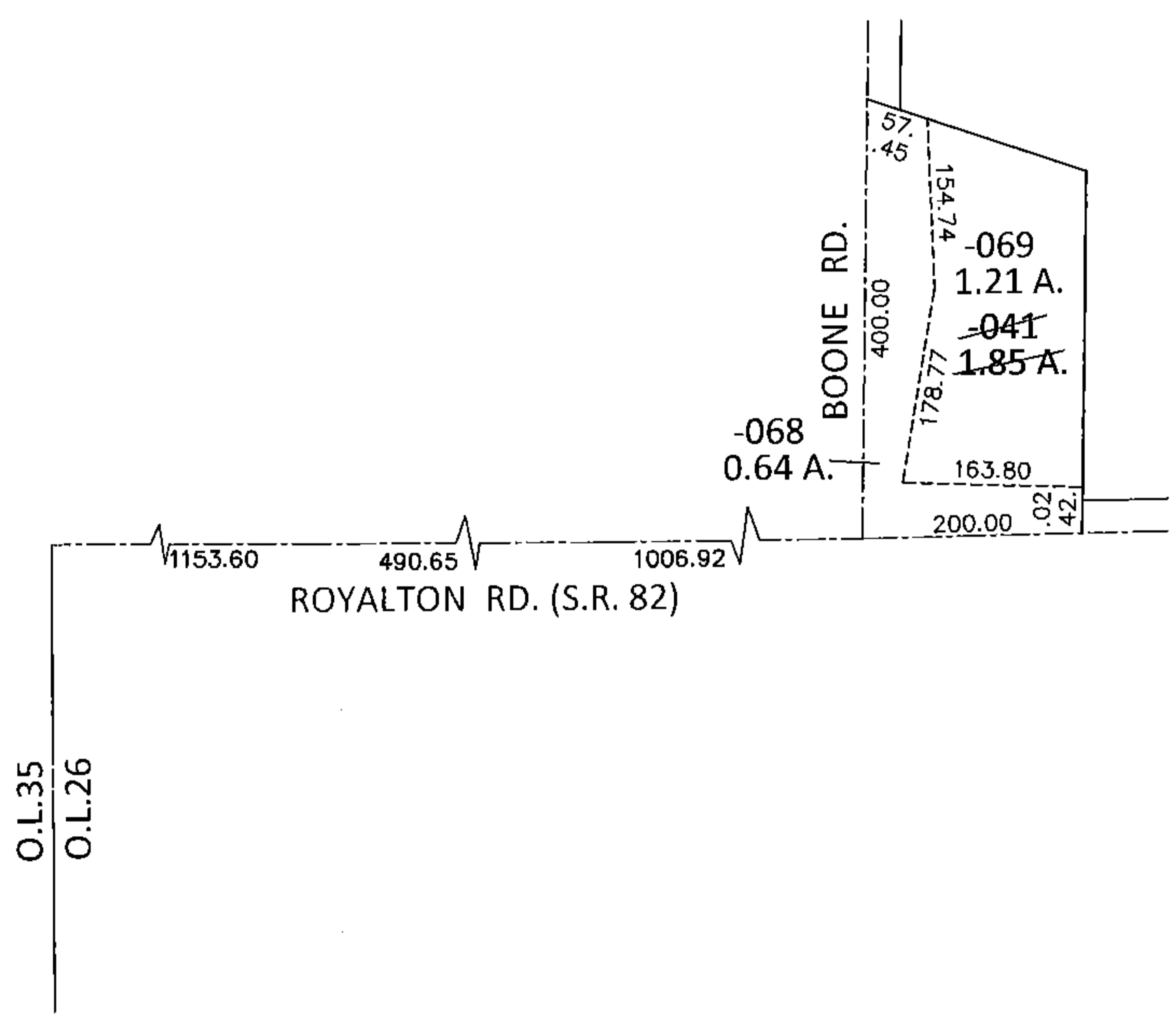
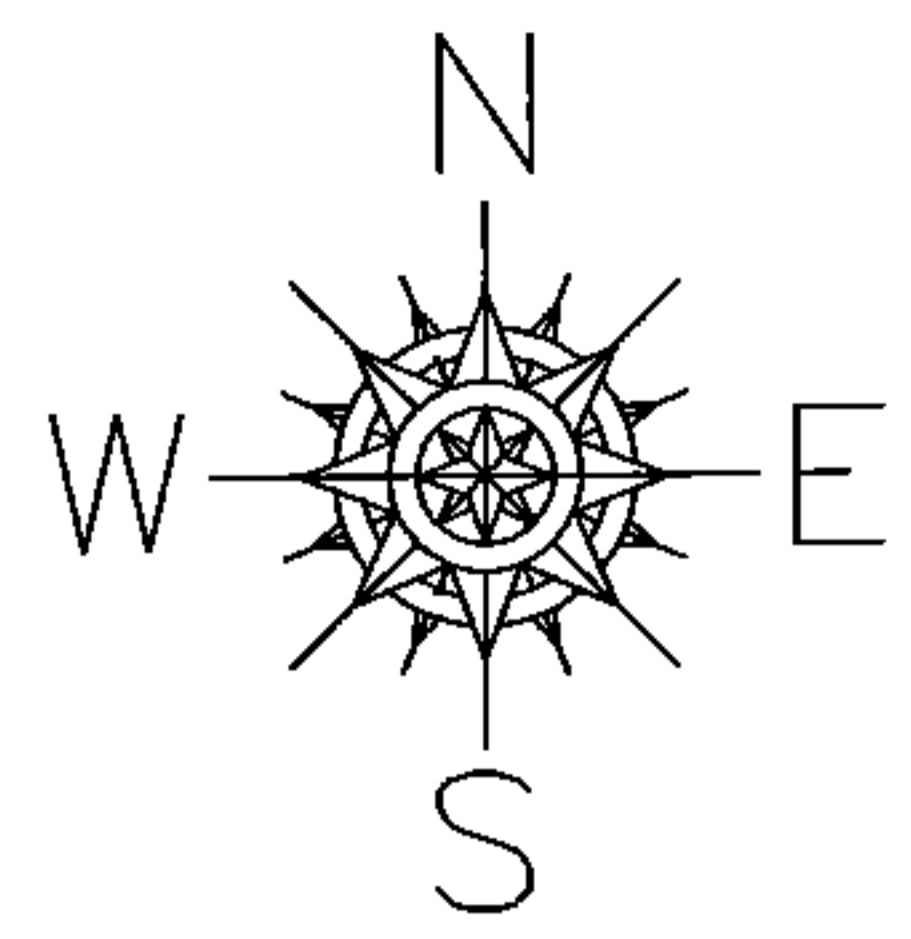
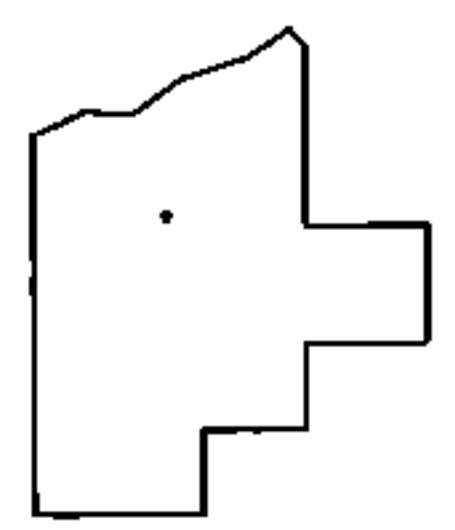


PARENT PARCEL: 12-00-016-000-041  
CHILD PARCEL: 12-00-016-000-068, -069  
STARTING POINT: INTERSECTION OF C/L OF S.R. 82 AND WEST LINE OF O.L.26

**15-00712**



**LOR-82-8.98**  
27-WD



**SPLITS/DEEDS PROCESSED**  
LORAIN COUNTY TAX MAP DEPARTMENT  
226 MIDDLE AVE. ELYRIA, OHIO

SURVEYED BY: AMY M. KELLY  
CLOSURE: .01:10,000  
MAP PAGE(S): 12-00-016-A  
APPROVED BY: RRM DATE: 4-7-15  
SCALE: 1"=200 PRIOR INST.: DV 1028/572